

Mental Health - North Mississippi State Hospital

1937 Briar Ridge Road

Paul A. Callens

AGENCY

ADDRESS

CHIEF EXECUTIVE OFFICER

	Actual Expenses June 30,2016	Estimated Expenses June 30,2017	Requested For June 30,2018	Requested Over/(Under) Estimated	
				AMOUNT	PERCENT
I. A. PERSONAL SERVICES					
1. Salaries, Wages & Fringe Benefits (Base)	6,153,050	5,929,504	6,562,638		
a. Additional Compensation			71,916		
b. Proposed Vacancy Rate (Dollar Amount)			703,139		
c. Per Diem					
Total Salaries, Wages & Fringe Benefits	6,153,050	5,929,504	5,931,415	1,911	0.03%
2. Travel					
a. Travel & Subsistence (In-State)	18,162	17,335	22,000	4,665	26.91%
b. Travel & Subsistence (Out-Of-State)	1,632	915	1,000	85	9.29%
c. Travel & Subsistence (Out-Of-Country)					
Total Travel	19,794	18,250	23,000	4,750	26.03%
B. CONTRACTUAL SERVICE S (Schedule B)					
a. Tuition, Rewards & Awards	26,211	30,000	30,000		
b. Communications, Transportation & Utilities	227,391	253,000	253,000		
c. Public Information	1,279	3,000	3,000		
d. Rents	54,372	60,000	60,000		
e. Repairs & Service	59,934	66,000	66,000		
f. Fees, Professional & Other Services	833,058	872,000	872,000		
g. Other Contractual Services	180,266	201,000	201,000		
h. Data Processing	108,849	111,000	111,000		
i. Other	3,127	4,000	4,000		
Total Contractual Services	1,494,487	1,600,000	1,600,000		
C. COMMODITIES (Schedule C)					
a. Maintenance & Construction Materials & Supplies	13,379	15,600	15,600		
b. Printing & Office Supplies & Materials	12,556	14,700	14,700		
c. Equipment, Repair Parts, Supplies & Accessories	33,899	39,700	39,700		
d. Professional & Scientific Supplies & Materials	347,815	404,000	404,000		
e. Other Supplies & Materials	43,533	51,000	51,000		
Total Commodities	451,182	525,000	525,000		
D. CAPITAL OUTLAY					
1. Total Other Than Equipment (Schedule D-1)		1,000	238,000	237,000	23,700.00%
2. Equipment (Schedule D-2)					
b. Road Machinery, Farm & Other Working Equipment					
c. Office Machines, Furniture, Fixtures & Equipment					
d. IS Equipment (Data Processing & Telecommunications)	4,699		5,000	5,000	100.00%
e. Equipment - Lease Purchase					
f. Other Equipment	4,305	9,000	4,000	(5,000)	(55.56%)
Total Equipment (Schedule D-2)	9,004	9,000	9,000		
3. Vehicles (Schedule D-3)			24,000	24,000	100.00%
4. Wireless Comm. Devices (Schedule D-4)					
E. SUBSIDIES, LOANS & GRANTS (Schedule E)	88,993	89,000	89,000		
TOTAL EXPENDITURES	8,216,510	8,171,754	8,439,415	267,661	3.28%
II. BUDGET TO BE FUNDED AS FOLLOWS:					
Cash Balance-Unencumbered	546,167	207,424	175,085	(32,339)	(15.59%)
General Fund Appropriation (Enter General Fund Lapse Below)	5,543,778	5,353,564	5,844,013	490,449	9.16%
State Support Special Funds	425,148	425,148	425,148		
Federal Funds _____ Other Special Funds (Specify) _____					
Medicare Collections	1,849,688	2,335,520	2,145,000	(190,520)	(8.16%)
Hospital Collections	59,153	25,183	25,254	71	0.28%
Less: Estimated Cash Available Next Fiscal Period	(207,424)	(175,085)	(175,085)		
TOTAL FUNDS (equals Total Expenditures above)	8,216,510	8,171,754	8,439,415	267,661	3.28%
GENERAL FUND LAPSE	55,366				
III: PERSONNEL DATA					
Number of Positions Authorized in Appropriation Bill					
a.) Perm Full	112	112	112		
b.) Perm Part					
c.) T-L Full					
d.) T-L Part					
Average Annual Vacancy Rate (Percentage)					
a.) Perm Full	4.46	10.70	10.70		
b.) Perm Part					
c.) T-L Full					
d.) T-L Part					

Approved by: Paul A. Callens
Official of Board or Commission

Submitted by: Joe M. Rials

Date: 8/1/2016 4:13 PM

Budget Officer: Joe M. Rials / jrials@nmsh.state.ms.us

Phone Number: 662-690-4248

Title: Director of Fiscal Services

REQUEST BY FUNDING SOURCE

Name of Agency : Mental Health - North Mississippi State Hospital

Specify Funding Sources As Shown Below	FY 2016 Actual Amount	% of Line Item	% of Total Budget	FY 2017 Estimated Amount	% of Line Item	% of Total Budget	FY 2018 Requested Amount	% of Line Item	% of Total Budget
1. General _____ State Support Special (Specify) _____	5,301,915	86.17%		5,353,564	90.29%		5,607,013	94.53%	
2. Budget Contingency Fund									
3. Education Enhancement Fund									
4. Health Care Expendable Fund	178,813	2.91%							
5. Tobacco Control Fund									
6. Capital Expense Fund									
7. Working Cash Stabilization Reserve Fund									
8. Federal _____ Other Special (Specify) _____									
9. Medicare Collections	672,322	10.93%		575,940	9.71%		324,402	5.47%	
10. Hospital Collections									
11.									
12.									
Total Salaries	6,153,050		74.89%	5,929,504		72.56%	5,931,415		70.28%
1. General _____ State Support Special (Specify) _____	6,727	33.99%							
2. Budget Contingency Fund									
3. Education Enhancement Fund									
4. Health Care Expendable Fund	5,149	26.01%							
5. Tobacco Control Fund									
6. Capital Expense Fund									
7. Working Cash Stabilization Reserve Fund									
8. Federal _____ Other Special (Specify) _____									
9. Medicare Collections	7,918	40.00%		18,250	100.00		23,000	100.00	
10. Hospital Collections									
11.									
12.									
Total Travel	19,794		0.24%	18,250		0.22%	23,000		0.27%
1. General _____ State Support Special (Specify) _____	235,104	15.73%							
2. Budget Contingency Fund									
3. Education Enhancement Fund									
4. Health Care Expendable Fund	169,504	11.34%		325,148	20.32%		325,148	20.32%	
5. Tobacco Control Fund									
6. Capital Expense Fund									
7. Working Cash Stabilization Reserve Fund									
8. Federal _____ Other Special (Specify) _____									
9. Medicare Collections	1,089,879	72.93%		1,274,852	79.68%		1,274,852	79.68%	
10. Hospital Collections									
11.									
12.									
Total Contractual	1,494,487		18.19%	1,600,000		19.58%	1,600,000		18.96%
1. General _____ State Support Special (Specify) _____	32	0.01%							
2. Budget Contingency Fund									
3. Education Enhancement Fund									
4. Health Care Expendable Fund	36,959	8.19%		100,000	19.05%		100,000	19.05%	
5. Tobacco Control Fund									
6. Capital Expense Fund									
7. Working Cash Stabilization Reserve Fund									
8. Federal _____ Other Special (Specify) _____									
9. Medicare Collections	414,191	91.80%		425,000	80.95%		425,000	80.95%	
10. Hospital Collections									
11.									
12.									
Total Commodities	451,182		5.49%	525,000		6.42%	525,000		6.22%

REQUEST BY FUNDING SOURCE

Name of Agency : Mental Health - North Mississippi State Hospital

Specify Funding Sources As Shown Below	FY 2016 Actual Amount	% of Line Item	% of Total Budget	FY 2017 Estimated Amount	% of Line Item	% of Total Budget	FY 2018 Requested Amount	% of Line Item	% of Total Budget
1. General _____ State Support Special (Specify) _____							237,000	99.58%	
2. Budget Contingency Fund									
3. Education Enhancement Fund									
4. Health Care Expendable Fund									
5. Tobacco Control Fund									
6. Capital Expense Fund									
7. Working Cash Stabilization Reserve Fund									
8. Federal _____ Other Special (Specify) _____									
9. Medicare Collections				1,000	100.00		1,000	0.42%	
10. Hospital Collections									
11.									
12.									
Total Capital Other Than Equipment				1,000		0.01%	238,000		2.82%
1. General _____ State Support Special (Specify) _____									
2. Budget Contingency Fund									
3. Education Enhancement Fund									
4. Health Care Expendable Fund	4,699	52.19%							
5. Tobacco Control Fund									
6. Capital Expense Fund									
7. Working Cash Stabilization Reserve Fund									
8. Federal _____ Other Special (Specify) _____									
9. Medicare Collections	4,305	47.81%		9,000	100.00		9,000	100.00	
10. Hospital Collections									
11.									
12.									
Total Capital Equipment	9,004		0.11%	9,000		0.11%	9,000		0.11%
1. General _____ State Support Special (Specify) _____									
2. Budget Contingency Fund									
3. Education Enhancement Fund									
4. Health Care Expendable Fund									
5. Tobacco Control Fund									
6. Capital Expense Fund									
7. Working Cash Stabilization Reserve Fund									
8. Federal _____ Other Special (Specify) _____									
9. Medicare Collections							24,000	100.00	
10. Hospital Collections									
11.									
12.									
Total Vehicles							24,000		0.28%
1. General _____ State Support Special (Specify) _____									
2. Budget Contingency Fund									
3. Education Enhancement Fund									
4. Health Care Expendable Fund									
5. Tobacco Control Fund									
6. Capital Expense Fund									
7. Working Cash Stabilization Reserve Fund									
8. Federal _____ Other Special (Specify) _____									
9. Medicare Collections									
10. Hospital Collections									
11.									
12.									
Total Wireless Communication Devs.									

REQUEST BY FUNDING SOURCE

Name of Agency : Mental Health - North Mississippi State Hospital

Specify Funding Sources As Shown Below	FY 2016 Actual Amount	% of Line Item	% of Total Budget	FY 2017 Estimated Amount	% of Line Item	% of Total Budget	FY 2018 Requested Amount	% of Line Item	% of Total Budget
1. General _____ State Support Special (Specify) _____									
2. Budget Contingency Fund									
3. Education Enhancement Fund									
4. Health Care Expendable Fund	30,024	33.74%							
5. Tobacco Control Fund									
6. Capital Expense Fund									
7. Working Cash Stabilization Reserve Fund									
8. Federal _____ Other Special (Specify) _____									
9. Medicare Collections	58,969	66.26%		89,000	100.00		89,000	100.00	
10. Hospital Collections									
11.									
12.									
Total Subsidies	88,993		1.08%	89,000		1.09%	89,000		1.05%
1. General _____ State Support Special (Specify) _____	5,543,778	67.47%		5,353,564	65.51%		5,844,013	69.25%	
2. Budget Contingency Fund									
3. Education Enhancement Fund									
4. Health Care Expendable Fund	425,148	5.17%		425,148	5.20%		425,148	5.04%	
5. Tobacco Control Fund									
6. Capital Expense Fund									
7. Working Cash Stabilization Reserve Fund									
8. Federal _____ Other Special (Specify) _____									
9. Medicare Collections	2,247,584	27.35%		2,393,042	29.28%		2,170,254	25.72%	
10. Hospital Collections									
11.									
12.									
TOTAL	8,216,510		100.00%	8,171,754		100.00%	8,439,415		100.00%

SPECIAL FUNDS DETAIL

Mental Health - North Mississippi State Hospital (384-00)

Name of Agency

S. STATE SUPPORT SPECIAL FUNDS		(1) Actual Revenues FY 2016	(2) Estimated Revenues FY 2017	(3) Requested Revenues FY 2018
Source (Fund Number)	Detailed Description of Source			
	Cash Balance-Unencumbered			
Budget Contingency Fund	BCF - Budget Contingency Fund			
Education Enhancement Fund	EEF - Education Enhancement Fund			
Health Care Expendable Fund (6236400000)	HCEF - Health Care Expendable Fund	425,148	425,148	425,148
Tobacco Control Fund	TCF - Tobacco Control Fund			
Capital Expense Fund	CEF - Capital Expense Fund			
Working Cash Stabilization Reserve Fund	WCSRF - Working Cash Stabilization Reserve Fund			
State Support Special Fund TOTAL		425,148	425,148	425,148
STATE SUPPORT SPECIAL FUND LAPSE				

A. FEDERAL FUNDS *		Percentage Match Requirement	(1) Actual Revenues FY 2016	(2) Estimated Revenues FY 2017	(3) Requested Revenues FY 2018
Source (Fund Number)	Detailed Description of Source	FY 2017 FY 2018			
	Cash Balance-Unencumbered				
Federal Fund TOTAL					

B. OTHER SPECIAL FUNDS (NON-FED'L)		(1) Actual Revenues FY 2016	(2) Estimated Revenues FY 2017	(3) Requested Revenues FY 2018
Source (Fund Number)	Detailed Description of Source			
	Cash Balance-Unencumbered	546,167	207,424	175,085
Medicare Collections (3338400000)	Medicare Collections	1,849,688	2,335,520	2,145,000
Hospital Collections (3338400000)	Medical Records, Refunds, Private Insurance and Patient Paymenets	59,153	25,183	25,254
Other Special Fund TOTAL		2,455,008	2,568,127	2,345,339

SECTIONS S + A + B TOTAL	2,880,156	2,993,275	2,770,487
---------------------------------	------------------	------------------	------------------

C. TREASURY FUND/BANK ACCOUNTS *	Fund/Account Number	Name of Bank (If Applicable)	(1) Reconciled Balance as of 6/30/16	(2) Balance as of 6/30/17	(3) Balance as of 6/30/18
Petty Cash	52995024	Bancorp South	1,704	1,704	1,704
Clearing Account	60174588	Bancorp South	318	318	318

* Any non-federal funds that have restricted uses must be identified and narrative of restrictions attached.

**NARRATIVE OF SPECIAL FUNDS DETAIL AND TREASURY
FUND/BANK ACCOUNTS**

Mental Health - North Mississippi State Hospital (384-00)

Name of Agency

STATE SUPPORT SPECIAL FUNDS

State Support Special Funds that North Mississippi State Hospital will receive during FY2018 are Health Care Expendable Funds. (6236400000)

FEDERAL FUNDS

No Federal Funds will be received by North Mississippi State Hospital in FY2018.

OTHER SPECIAL FUNDS

Special Funds that North Mississippi State Hospital will collect during FY2018 are fees from patients for services provided, from insurance companies and Medicare payments. Monies collected by the hospital for services provided include but are not limited to: Medicare payments for patients that are covered by Medicare, payments for medical records that are supplied as requested by patients and other monies that are generated by the hospital. (3338400000)

TREASURY FUND / BANK

North Mississippi State Hospital has a petty cash fund that will be used in the operation of the facility.

North Mississippi State Hospital has a clearing account that is used to transfer monies received by the hospital from Medicare and other sources to the state treasury.

CONTINUATION AND EXPANDED TOTAL REQUEST

Mental Health - North Mississippi State Hospital (384-00)

SUMMARY OF ALL PROGRAMS

Name of Agency					Program
FY 2016 Actual					
	(1) General	(2) State Support Special	(3) Federal	(4) Other Special	(5) Total
Salaries,Wages & Fringe	5,301,915	178,813		672,322	6,153,050
Travel	6,727	5,149		7,918	19,794
Contractual Services	235,104	169,504		1,089,879	1,494,487
Commodities	32	36,959		414,191	451,182
Other Than Equipment					
Equipment		4,699		4,305	9,004
Vehicles					
Wireless Communication Devices					
Subsidies, Loans & Grants		30,024		58,969	88,993
Total	5,543,778	425,148		2,247,584	8,216,510
No. of Positions (FTE)	112.00				112.00

FY 2017 Estimated					
	(6) General	(7) State Support Special	(8) Federal	(9) Other Special	(10) Total
Salaries,Wages & Fringe	5,353,564			575,940	5,929,504
Travel				18,250	18,250
Contractual Services		325,148		1,274,852	1,600,000
Commodities		100,000		425,000	525,000
Other Than Equipment				1,000	1,000
Equipment				9,000	9,000
Vehicles					
Wireless Communication Devices					
Subsidies, Loans & Grants				89,000	89,000
Total	5,353,564	425,148		2,393,042	8,171,754
No. of Positions (FTE)	112.00				112.00

FY 2018 Increase/Decrease for Continuation					
	(11) General	(12) State Support Special	(13) Federal	(14) Other Special	(15) Total
Salaries,Wages & Fringe	253,449			(251,538)	1,911
Travel				4,750	4,750
Contractual Services					
Commodities					
Other Than Equipment	237,000				237,000
Equipment					
Vehicles				24,000	24,000
Wireless Communication Devices					
Subsidies, Loans & Grants					
Total	490,449			(222,788)	267,661
No. of Positions (FTE)					

Note: FY2018 Total Request = FY2017 Estimated + FY2018 Incr(Decr) for Continuation + FY2018 Expansion/Reduction of Existing Activities + FY2018 New Activities.

CONTINUATION AND EXPANDED TOTAL REQUEST

Mental Health - North Mississippi State Hospital (384-00)

SUMMARY OF ALL PROGRAMS

Name of Agency	Program				
	FY 2018 Expansion/Reduction of Existing Activities				
	(16) General	(17) State Support Special	(18) Federal	(19) Other Special	(20) Total
Salaries,Wages & Fringe					
Travel					
Contractual Services					
Commodities					
Other Than Equipment					
Equipment					
Vehicles					
Wireless Communication Devices					
Subsidies, Loans & Grants					
Total					
No. of Positions (FTE)					

	FY 2018 New Activities (*)				
	(21) General	(22) State Support Special	(23) Federal	(24) Other Special	(25) Total
Salaries,Wages & Fringe					
Travel					
Contractual Services					
Commodities					
Other Than Equipment					
Equipment					
Vehicles					
Wireless Communication Devices					
Subsidies, Loans & Grants					
Total					
No. of Positions (FTE)					

	FY 2018 Total Request				
	(26) General	(27) State Support Special	(28) Federal	(29) Other Special	(30) Total
Salaries,Wages & Fringe	5,607,013			324,402	5,931,415
Travel				23,000	23,000
Contractual Services		325,148		1,274,852	1,600,000
Commodities		100,000		425,000	525,000
Other Than Equipment	237,000			1,000	238,000
Equipment				9,000	9,000
Vehicles				24,000	24,000
Wireless Communication Devices					
Subsidies, Loans & Grants				89,000	89,000
Total	5,844,013	425,148		2,170,254	8,439,415
No. of Positions (FTE)	112.00				112.00

Note: FY2018 Total Request = FY2017 Estimated + FY2018 Incr(Decr) for Continuation + FY2018 Expansion/Reduction of Existing Activities + FY2018 New Activities.

**SUMMARY OF PROGRAMS
FORM MBR-1-03sum**

Mental Health - North Mississippi State Hospital (384-00)

Name of Agency

FUNDING REQUESTED FISCAL YEAR 2018

	PROGRAM	GENERAL	ST. SUPP. SPECIAL	FEDERAL	OTHER SPECIAL	TOTAL
1.	MI - INSTITUTIONAL CARE	5,469,263	395,388		1,999,339	7,863,990
2.	MI - SUPPORT SERVICES	374,750	29,760		170,915	575,425
	Summary of All Programs	5,844,013	425,148		2,170,254	8,439,415

CONTINUATION AND EXPANDED REQUEST

Program 1 of 2

Mental Health - North Mississippi State Hospital (384-00)

MI - INSTITUTIONAL CARE

Name of Agency

Program

	FY 2016 Actual				
	(1) General	(2) State Support Special	(3) Federal	(4) Other Special	(5) Total
Salaries,Wages & Fringe	4,930,781	166,296		625,259	5,722,336
Travel	6,256	4,789		7,364	18,409
Contractual Services	218,647	157,639		1,013,587	1,389,873
Commodities	30	34,372		385,198	419,600
Other Than Equipment					
Equipment		4,370		4,004	8,374
Vehicles					
Wireless Communication Devices					
Subsidies, Loans & Grants		27,922		54,841	82,763
Total	5,155,714	395,388		2,090,253	7,641,355
No. of Positions (FTE)	105.00				105.00

	FY 2017 Estimated				
	(6) General	(7) State Support Special	(8) Federal	(9) Other Special	(10) Total
Salaries,Wages & Fringe	4,978,814			535,625	5,514,439
Travel				16,972	16,972
Contractual Services		302,388		1,185,612	1,488,000
Commodities		93,000		395,250	488,250
Other Than Equipment				930	930
Equipment				8,370	8,370
Vehicles					
Wireless Communication Devices					
Subsidies, Loans & Grants				82,770	82,770
Total	4,978,814	395,388		2,225,529	7,599,731
No. of Positions (FTE)	105.00				105.00

	FY 2018 Increase/Decrease for Continuation				
	(11) General	(12) State Support Special	(13) Federal	(14) Other Special	(15) Total
Salaries,Wages & Fringe	253,449			(254,940)	(1,491)
Travel				4,750	9,500
Contractual Services					
Commodities					
Other Than Equipment	237,000				237,000
Equipment					
Vehicles				24,000	24,000
Wireless Communication Devices					
Subsidies, Loans & Grants					
Total	490,449			(226,190)	264,259
No. of Positions (FTE)					

Note: FY2018 Total Request = FY2017 Estimated + FY2018 Incr(Decr) for Continuation + FY2018 Expansion/Reduction of Existing Activities + FY2018 New Activities.

CONTINUATION AND EXPANDED REQUEST

Mental Health - North Mississippi State Hospital (384-00)

MI - INSTITUTIONAL CARE

Name of Agency

Program

	FY 2018 Expansion/Reduction of Existing Activities				
	(16) General	(17) State Support Special	(18) Federal	(19) Other Special	(20) Total
Salaries,Wages & Fringe					
Travel					
Contractual Services					
Commodities					
Other Than Equipment					
Equipment					
Vehicles					
Wireless Communication Devices					
Subsidies, Loans & Grants					
Total					
No. of Positions (FTE)					

	FY 2018 New Activities (*)				
	(21) General	(22) State Support Special	(23) Federal	(24) Other Special	(25) Total
Salaries,Wages & Fringe					
Travel					
Contractual Services					
Commodities					
Other Than Equipment					
Equipment					
Vehicles					
Wireless Communication Devices					
Subsidies, Loans & Grants					
Total					
No. of Positions (FTE)					

	FY 2018 Total Request				
	(26) General	(27) State Support Special	(28) Federal	(29) Other Special	(30) Total
Salaries,Wages & Fringe	5,232,263			280,685	5,512,948
Travel				21,722	21,722
Contractual Services		302,388		1,185,612	1,488,000
Commodities		93,000		395,250	488,250
Other Than Equipment	237,000			930	237,930
Equipment				8,370	8,370
Vehicles				24,000	24,000
Wireless Communication Devices					
Subsidies, Loans & Grants				82,770	82,770
Total	5,469,263	395,388		1,999,339	7,863,990
No. of Positions (FTE)	105.00				105.00

Note: FY2018 Total Request = FY2017 Estimated + FY2018 Incr(Decr) for Continuation + FY2018 Expansion/Reduction of Existing Activities + FY2018 New Activities.

CONTINUATION AND EXPANDED REQUEST

Mental Health - North Mississippi State Hospital (384-00)

MI - SUPPORT SERVICES

Name of Agency

Program

	FY 2016 Actual				
	(1) General	(2) State Support Special	(3) Federal	(4) Other Special	(5) Total
Salaries,Wages & Fringe	371,134	12,517		47,063	430,714
Travel	471	360		554	1,385
Contractual Services	16,457	11,865		76,292	104,614
Commodities	2	2,587		28,993	31,582
Other Than Equipment					
Equipment		329		301	630
Vehicles					
Wireless Communication Devices					
Subsidies, Loans & Grants		2,102		4,128	6,230
Total	388,064	29,760		157,331	575,155
No. of Positions (FTE)	7.00				7.00

	FY 2017 Estimated				
	(6) General	(7) State Support Special	(8) Federal	(9) Other Special	(10) Total
Salaries,Wages & Fringe	374,750			40,315	415,065
Travel				1,278	1,278
Contractual Services		22,760		89,240	112,000
Commodities		7,000		29,750	36,750
Other Than Equipment				70	70
Equipment				630	630
Vehicles					
Wireless Communication Devices					
Subsidies, Loans & Grants				6,230	6,230
Total	374,750	29,760		167,513	572,023
No. of Positions (FTE)	7.00				7.00

	FY 2018 Increase/Decrease for Continuation				
	(11) General	(12) State Support Special	(13) Federal	(14) Other Special	(15) Total
Salaries,Wages & Fringe				3,402	3,402
Travel					
Contractual Services					
Commodities					
Other Than Equipment					
Equipment					
Vehicles					
Wireless Communication Devices					
Subsidies, Loans & Grants					
Total				3,402	3,402
No. of Positions (FTE)					

Note: FY2018 Total Request = FY2017 Estimated + FY2018 Incr(Decr) for Continuation + FY2018 Expansion/Reduction of Existing Activities + FY2018 New Activities.

CONTINUATION AND EXPANDED REQUEST

Mental Health - North Mississippi State Hospital (384-00)

MI - SUPPORT SERVICES

Name of Agency

Program

	FY 2018 Expansion/Reduction of Existing Activities				
	(16) General	(17) State Support Special	(18) Federal	(19) Other Special	(20) Total
Salaries,Wages & Fringe					
Travel					
Contractual Services					
Commodities					
Other Than Equipment					
Equipment					
Vehicles					
Wireless Communication Devices					
Subsidies, Loans & Grants					
Total					
No. of Positions (FTE)					

	FY 2018 New Activities (*)				
	(21) General	(22) State Support Special	(23) Federal	(24) Other Special	(25) Total
Salaries,Wages & Fringe					
Travel					
Contractual Services					
Commodities					
Other Than Equipment					
Equipment					
Vehicles					
Wireless Communication Devices					
Subsidies, Loans & Grants					
Total					
No. of Positions (FTE)					

	FY 2018 Total Request				
	(26) General	(27) State Support Special	(28) Federal	(29) Other Special	(30) Total
Salaries,Wages & Fringe	374,750			43,717	418,467
Travel				1,278	1,278
Contractual Services		22,760		89,240	112,000
Commodities		7,000		29,750	36,750
Other Than Equipment				70	70
Equipment				630	630
Vehicles					
Wireless Communication Devices					
Subsidies, Loans & Grants				6,230	6,230
Total	374,750	29,760		170,915	575,425
No. of Positions (FTE)	7.00				7.00

Note: FY2018 Total Request = FY2017 Estimated + FY2018 Incr(Decr) for Continuation + FY2018 Expansion/Reduction of Existing Activities + FY2018 New Activities.

PROGRAM DECISION UNITS

Mental Health - North Mississippi State Hospital

1 - MI - INSTITUTIONAL CARE

Name of Agency	Program Name							
	A	B	C	D	E	F	G	H
EXPENDITURES	FY 2017 Appropriated	Escalations By DFA	Non-Recurring Items	Educational Benchmarks	Position Reclassification	Building Repair	Vehicles	Spending Authority
SALARIES	5,514,439			30,011	38,504			(70,006)
GENERAL	4,978,814				19,436			234,013
ST. SUP. SPECIAL								
FEDERAL								
OTHER	535,625			30,011	19,068			(304,019)
TRAVEL	16,972							4,750
GENERAL								
ST. SUP. SPECIAL								
FEDERAL								
OTHER	16,972							4,750
CONTRACTUAL	1,488,000							
GENERAL								
ST. SUP. SPECIAL	302,388							
FEDERAL								
OTHER	1,185,612							
COMMODITIES	488,250							
GENERAL								
ST. SUP. SPECIAL	93,000							
FEDERAL								
OTHER	395,250							
CAPTITAL-OTE	930					237,000		
GENERAL						237,000		
ST. SUP. SPECIAL								
FEDERAL								
OTHER	930							
EQUIPMENT	8,370							
GENERAL								
ST. SUP. SPECIAL								
FEDERAL								
OTHER	8,370							
VEHICLES							24,000	
GENERAL								
ST. SUP. SPECIAL								
FEDERAL								
OTHER							24,000	
WIRELESS DEV								
GENERAL								
ST. SUP. SPECIAL								
FEDERAL								
OTHER								
SUBSIDIES	82,770							
GENERAL								
ST. SUP. SPECIAL								
FEDERAL								
OTHER	82,770							
TOTAL	7,599,731			30,011	38,504	237,000	24,000	(65,256)

FUNDING

GENERAL FUNDS	4,978,814				19,436	237,000		234,013
ST. SUP. SPCL FUNDS	395,388							
FEDERAL FUNDS								
OTHER SP. FUNDS	2,225,529			30,011	19,068		24,000	(299,269)
TOTAL	7,599,731			30,011	38,504	237,000	24,000	(65,256)

POSITIONS

GENERAL FTE	105.00							
ST. SUP. SPCL. FTE								
FEDERAL FTE								
OTHER SP. FTE								
TOTAL	105.00							

PRIORITY LEVEL :

				4	3	2	6	1
--	--	--	--	---	---	---	---	---

PROGRAM DECISION UNITS

I J

EXPENDITURES	Total Funding Change	FY 2018 Total Request					
SALARIES	(1,491)	5,512,948					
GENERAL	253,449	5,232,263					
ST. SUP. SPECIAL							
FEDERAL							
OTHER	(254,940)	280,685					
TRAVEL	4,750	21,722					
GENERAL							
ST. SUP. SPECIAL							
FEDERAL							
OTHER	4,750	21,722					
CONTRACTUAL		1,488,000					
GENERAL							
ST. SUP. SPECIAL		302,388					
FEDERAL							
OTHER		1,185,612					
COMMODITIES		488,250					
GENERAL							
ST. SUP. SPECIAL		93,000					
FEDERAL							
OTHER		395,250					
CAPTITAL-OTE	237,000	237,930					
GENERAL	237,000	237,000					
ST. SUP. SPECIAL							
FEDERAL							
OTHER		930					
EQUIPMENT		8,370					
GENERAL							
ST. SUP. SPECIAL							
FEDERAL							
OTHER		8,370					
VEHICLES	24,000	24,000					
GENERAL							
ST. SUP. SPECIAL							
FEDERAL							
OTHER	24,000	24,000					
WIRELESS DEV							
GENERAL							
ST. SUP. SPECIAL							
FEDERAL							
OTHER							
SUBSIDIES		82,770					
GENERAL							
ST. SUP. SPECIAL							
FEDERAL							
OTHER		82,770					
TOTAL	264,259	7,863,990					

FUNDING

GENERAL FUNDS	490,449	5,469,263					
ST. SUP. SPCL FUNDS		395,388					
FEDERAL FUNDS							
OTHER SP. FUNDS	(226,190)	1,999,339					
TOTAL	264,259	7,863,990					

POSITIONS

GENERAL FTE		105.00					
ST. SUP. SPCL. FTE							
FEDERAL FTE							
OTHER SP. FTE							
TOTAL		105.00					

PRIORITY LEVEL :

--	--	--	--	--	--	--	--

PROGRAM DECISION UNITS

Mental Health - North Mississippi State Hospital

2 - MI - SUPPORT SERVICES

Name of Agency

Program Name

	A	B	C	D	E	F		
EXPENDITURES	FY 2017 Appropriated	Escalations By DFA	Non-Recurring Items	Educational Benchmarks	Total Funding Change	FY 2018 Total Request		
SALARIES	415,065			3,402	3,402	418,467		
GENERAL	374,750					374,750		
ST. SUP. SPECIAL								
FEDERAL								
OTHER	40,315			3,402	3,402	43,717		
TRAVEL	1,278					1,278		
GENERAL								
ST. SUP. SPECIAL								
FEDERAL								
OTHER	1,278					1,278		
CONTRACTUAL	112,000					112,000		
GENERAL								
ST. SUP. SPECIAL	22,760					22,760		
FEDERAL								
OTHER	89,240					89,240		
COMMODITIES	36,750					36,750		
GENERAL								
ST. SUP. SPECIAL	7,000					7,000		
FEDERAL								
OTHER	29,750					29,750		
CAPTITAL-OTE	70					70		
GENERAL								
ST. SUP. SPECIAL								
FEDERAL								
OTHER	70					70		
EQUIPMENT	630					630		
GENERAL								
ST. SUP. SPECIAL								
FEDERAL								
OTHER	630					630		
VEHICLES								
GENERAL								
ST. SUP. SPECIAL								
FEDERAL								
OTHER								
WIRELESS DEV								
GENERAL								
ST. SUP. SPECIAL								
FEDERAL								
OTHER								
SUBSIDIES	6,230					6,230		
GENERAL								
ST. SUP. SPECIAL								
FEDERAL								
OTHER	6,230					6,230		
TOTAL	572,023			3,402	3,402	575,425		

FUNDING

GENERAL FUNDS	374,750					374,750		
ST. SUP. SPCL FUNDS	29,760					29,760		
FEDERAL FUNDS								
OTHER SP. FUNDS	167,513			3,402	3,402	170,915		
TOTAL	572,023			3,402	3,402	575,425		

POSITIONS

GENERAL FTE	7.00					7.00		
ST. SUP. SPCL. FTE								
FEDERAL FTE								
OTHER SP. FTE								
TOTAL	7.00					7.00		

PRIORITY LEVEL :

				5				
--	--	--	--	---	--	--	--	--

PROGRAM NARRATIVE

Program Data Collected in Accordance with the Mississippi Performance Budget and Strategic Planning Act of 1994
(To Accompany Form MBR-1-03)

Mental Health - North Mississippi State Hospital

1 - MI - INSTITUTIONAL CARE

Name of Agency

Program Name

I. Program Description:

The Mental Illness - Institutional Care Program provides acute psychiatric care for adult men and women who reside in the catchment area for the hospital. During FY2018, North Mississippi State Hospital plans to continue operation of 50 beds for the treatment of those persons with mental illness who have been committed to the hospital through the chancery court system. The facility targets a 28-day length of stay, with a maximum of 90-day length of stay; thereby, providing intensive discharge planning from the time of admission. Professional staff concentrate not only on inpatient treatment, but also on follow-up aftercare and family education.

Patients committed to North Mississippi State Hospital will receive medical and psychiatric evaluation and treatment, psychological evaluation and treatment, social services, dietary services, nursing care, recreational services and a variety of other treatment and rehabilitation services. North Mississippi State Hospital is licensed by the Mississippi State Department of Health and is accredited by The Joint Commission.

II. Program Objective:

To operate a short-term psychiatric hospital that provides a high quality of psychiatric care to meet the needs of individuals with mental illness and that meets the standards set forth by regulatory, licensing and accreditation agencies.

III. Current program activities as supported by the funding in Columns 6-15 (FY 2017 & FY 2018 Increase/Decrease for continuations) of MBR-1-03 and designated Budget Unit Decisions columns of MBR-1-03-A:

(D) Educational Benchmarks:

Educational Benchmarks are awarded based upon meeting requirements as set out by the State Personnel Board and are an incentive to continue to improve in your ability to perform your job requirements.

(E) Position Reclassifications:

Reclassification of MI-Institutional Care Social Worker PINs to conform to the State Personnel Board listing of positions and requirements for the employees filling those PINs.

(F) Building Repair:

Patient Building - Replacement of the Shingle Roof which because of its age is becoming a hazard to patient safety and causing damages to physical assets because of the leaks that occur because of rain. Sheets of plastic are being spread between the roof and the drop down ceiling tiles to catch rain water that is leaking into the building to avoid on going costs of replacing tiles, light fixtures and computer equipment.

(G) Vehicles:

Replacement of Dodge Van that is utilized for Patient Transport that has reached the end of its asset life. The vehicle to be replaced has in excess of 130,000 miles and is used on a daily basis to provide services, commodities and specialized equipment to the patients.

(H) Spending Authority Changes:

Revision of funding source from Medicare collections to General Funds is to offset the reduction in Medicare collections. The reduction in Medicare collections is based upon the facility receiving patients that have fully utilized their Medicare days and are committed to the state through the Chancery Court System.

PROGRAM NARRATIVE

Program Data Collected in Accordance with the Mississippi Performance Budget and Strategic Planning Act of 1994
(To Accompany Form MBR-1-03)

Mental Health - North Mississippi State Hospital

2 - MI - SUPPORT SERVICES

Name of Agency

Program Name

I. Program Description:

The Mental Illness - Support Services Program provides a comprehensive range of services designed to serve the needs of the patients and employees in the Institutional Care Program at North Mississippi State Hospital. These services include administration, personnel, and fiscal responsibilities of North Mississippi State Hospital.

II. Program Objective:

To provide support services necessary to direct and operate a comprehensive range of high quality services (1) to meet the needs of the individuals with mental illness, and (2) that meets the standards set by regulatory, licensing, and accreditation agencies and organizations.

III. Current program activities as supported by the funding in Columns 6-15 (FY 2017 & FY 2018 Increase/Decrease for continuations) of MBR-1-03 and designated Budget Unit Decisions columns of MBR-1-03-A:

(D) Educational Benchmarks:

Educational Benchmarks are awarded based upon meeting requirements as set out by the State Personnel Board and are an incentive to continue to improve in your ability to perform your job requirements.

Elements of Quality Program Design

For the Evaluation of Requests to Fund New Programs or New Activity in an Existing Program
(To Accompany Form MBR-1-03A)

PROGRAM PERFORMANCE INDICATORS AND MEASURES

Program Data Collected in Accordance with the Mississippi Performance Budget and Strategic Planning Act of 1994

Mental Health - North Mississippi State Hospital (384-00)

1 - MI - INSTITUTIONAL CARE

Name of Agency

PROGRAM NAME

PROGRAM OUTPUTS: (This is the measure of the process necessary to carry on the goals and objectives of this program. This is the volume produced, i.e., how many people served, how many documents generated.)

	FY 2016 APPRO	FY 2016 ACTUAL	FY 2017 ESTIMATED	FY 2018 PROJECTED
1 % of individuals readmitted between 0 - 59 days after discharge	49.00	9.30	9.00	9.00
2 % of individuals readmitted between 60 - 89 days after discharge	10.00	3.75	3.00	3.00
3 % of individuals readmitted between 90 - 119 days after discharge	12.00	2.40	2.00	2.00
4 % of individuals readmitted between 120 - 365 days after discharge	0.00	0.00	0.00	0.00
5 Average length of stay - Acute Psychiatric Care	30.00	27.00	27.00	27.00
6 Number of individuals discharged to Private Residence or Other Residential	5.00	468.00	475.00	475.00
7 Number of individuals discharged to Homeless or Homeless Shelter	8.00	10.00	10.00	10.00
8 Number of individuals discharged to Court	2.00	5.00	5.00	5.00
9 Number of individuals discharged to Group Home	40.00	21.00	30.00	30.00
10 Number of individuals discharged to Personal Care Home	35.00	44.00	40.00	40.00
11 Number of individuals discharged to Nursing Home	20.00	1.00	10.00	10.00
12 Number of individuals discharged to Institutional	0.00	8.00	10.00	10.00
13 Number of individuals discharged to Community Program	425.00	8.00	8.00	8.00
14 Number of individuals discharged to Halfway House	0.00	0.00	0.00	0.00
15 Number of individuals discharged to Other	5.00	6.00	5.00	5.00
16 % of occupancy - Acute Psychiatric Care	90.00	92.80	90.00	90.00
17 Number of staff trained in WRAP	20.00	18.00	18.00	18.00
18 Number of WRAP's conducted	250.00	380.00	400.00	400.00
19 Number of CMHC's received training	3.00	3.00	3.00	3.00
20 Number of individuals and families interviewed pre-discharge	250.00	10.00	12.00	12.00
21 Number of monthly discharges	45.00	48.00	45.00	45.00
22 Number of referrals to community mental health centers	450.00	462.00	450.00	450.00
23 Number of referrals kept	100.00	266.00	250.00	250.00
24 Number of Peer Bridgers	1.00	1.00	1.00	1.00
25 Number of Peer Bridgers trained in WRAP	1.00	1.00	1.00	1.00
26 Number of WRAPS conducted - Pilot site	1.00	380.00	400.00	0.00
27 Number of readmissions at Pilot Site	1.00	90.00	60.00	60.00
28 Number of individuals receiving service care plans that are transmitted to the next level of care within five days	500.00	511.00	500.00	500.00
29 Number of referrals to PACT Team	5.00	16.00	18.00	18.00
30 Number of hours worked per employee	2,080.00	1,902.00	1,936.00	0.00
31 Number of hours utilized for time away from facility	2,250.00	3,268.00	3,500.00	3,500.00
32 Number of late arrivals	300.00	885.00	1,000.00	1,000.00
33 Number of no-shows	0.00	0.00	5.00	5.00
34 Number of days off	5,000.00	4,282.00	5,000.00	5,000.00
35 More than 50% or more of all unique patients seen by EP have demographics recorded as structured data	500.00	100.00	100.00	100.00
36 Report on 40% or more of all permissible prescriptions by an EP during the reporting period are transmitted electronically using Certified EHR technology	50.00	50.00	50.00	50.00

PROGRAM PERFORMANCE INDICATORS AND MEASURES

Program Data Collected in Accordance with the Mississippi Performance Budget and Strategic Planning Act of 1994

Mental Health - North Mississippi State Hospital (384-00)

1 - MI - INSTITUTIONAL CARE

Name of Agency	PROGRAM NAME			
37 Report on 30% or more of all unique patients with at least one medication seen by an EP and have at least one medication order entered through CPOE.	50.00	50.00	50.00	50.00

PROGRAM EFFICIENCIES: (This is the measure of the cost, unit cost or productivity associated with a given outcome or output. This measure indicates linkage between services and funding, i.e., cost per investigation, cost per student or number of days to complete investigation.)

	FY 2016 APPRO	FY 2016 ACTUAL	FY 2017 ESTIMATED	FY 2018 PROJECTED
1 Cost per person per day - Acute Psychiatric Care	468.00	485.00	498.00	514.00
2 Reduction on readmissions	10.00	18.00	(2.00)	(2.00)
3 Average number of discharges per month utilizing person-centered care planning	22.00	40.00	40.00	40.00
4 Average number of discharges per quarter keeping follow-up referrals	5.00	57.50	60.00	60.00
5 Number of hours per exempt employee	100.00	1,902.00	1,800.00	1,800.00
6 Number of hours per non-exempt employee	20,800.00	1,950.00	1,800.00	1,800.00
7 Cost to implement Electronic Health Records System	64,000.00	160,000.00	64,000.00	64,000.00

PROGRAM OUTCOMES: (This is the measure of the quality or effectiveness of the services provided by this program. This measure provides an assessment of the actual impact or public benefit of your agency's actions. This is the results produced, i.e., increased customer satisfaction by x% within a 12-month period, reduce the number of traffic fatalities due to drunk drivers within a 12-month period.)

	FY 2016 APPRO	FY 2016 ACTUAL	FY 2017 ESTIMATED	FY 2018 PROJECTED
1 Maintain a 90% occupancy of inpatient beds by service of civilly committed individuals	90.00	92.80	90.00	90.00
2 Maintain admission rates within national trends	2.00	(18.00)	2.00	2.00
3 Establish a pilot utilizing Peer Bridgers to improve the process fro people transitioning from inpatient to community-based care	10.00	0.00	100.00	100.00
4 Increase the percentage of continuing care plans that are transmitted to the next level of care within five days of discharge	100.00	95.00	95.00	99.00
5 Increase the number of individuals referred to a Program of Assertive Community Treatment (PACT) Team	5.00	16.00	18.00	18.00
6 Improve/Enhance timekeeping and payroll records	100.00	100.00	100.00	100.00
7 Implement the Electronic Health Records system to meet current Meaningful Use requirements	100.00	90.00	90.00	90.00

PROGRAM PERFORMANCE INDICATORS AND MEASURES

Program Data Collected in Accordance with the Mississippi Performance Budget and Strategic Planning Act of 1994

Mental Health - North Mississippi State Hospital (384-00)

2 - MI - SUPPORT SERVICES

Name of Agency

PROGRAM NAME

PROGRAM OUTPUTS: (This is the measure of the process necessary to carry on the goals and objectives of this program. This is the volume produced, i.e., how many people served, how many documents generated.)

	FY 2016 APPRO	FY 2016 ACTUAL	FY 2017 ESTIMATED	FY 2018 PROJECTED
1 Number of successful property audits completed during the fiscal year	1.00	1.00	1.00	1.00
2 Collect and analyze monthly expenses	12.00	12.00	12.00	12.00
3 Collect and analyze monthly income	12.00	12.00	12.00	12.00
4 Monthly costs based upon MAGIC categories for expenses/income	12.00	12.00	12.00	12.00
5 Projected ending account balances per month by fund	12.00	12.00	12.00	12.00
6 Percentage of vacancies	0.01	6.40	5.00	8.00
7 Number of staff hired in current quarter	7.00	6.75	0.00	25.00
8 Number of training hours for compliance	72.00	1,619.00	1,400.00	1,400.00
9 Overtime as % of Salaries/Fringe Benefits	3.50	2.20	3.50	3.50
10 Number of employees at the beginning of the period	111.00	107.00	100.00	100.00
11 Number of employees at the end of the period	111.00	101.00	100.00	100.00
12 Number of employees separated during the period	30.00	31.00	30.00	25.00
13 Number of exit surveys completed	30.00	6.00	15.00	15.00
14 Number of identified areas of improvement	1.00	0.00	1.00	2.00
15 Number of employee surveys completed	10.00	60.00	50.00	50.00
16 Collection of employee issues to be addressed	1.00	3.00	3.00	3.00
17 Number of employee classes offered	700.00	1,075.00	1,000.00	1,000.00
18 Number of participants attending classes	4,000.00	5,171.00	4,000.00	4,000.00
19 Number of staff trained	111.00	111.00	100.00	100.00
20 Number of licensure and certification audits/reviews	1.00	1.00	1.00	1.00
21 Number of monthly admissions	45.00	48.00	50.00	50.00
22 Total number served	550.00	629.00	650.00	650.00
23 Number of monthly discharges	45.00	48.00	50.00	50.00
24 Monthly occupancy rate (patient days per month/bed days per month)	90.00	92.80	90.00	90.00
25 Facility utilization (patients days per month/patients days with no beds available for waiting list)	85.00	87.00	85.00	85.00
26 Number of contacts made	12.00	40.00	24.00	24.00
27 Number of community functions attended/participated in	12.00	11.00	12.00	12.00
28 Number of presentations	3.00	7.00	12.00	12.00
29 Number of contacts made with legislators or candidates	100.00	204.00	100.00	100.00
30 Number of contacts with sheriffs or chancery judges	25.00	35.00	25.00	25.00
31 Increase the number of individuals served	50.00	25.00	50.00	50.00

PROGRAM EFFICIENCIES: (This is the measure of the cost, unit cost or productivity associated with a given outcome or output. This measure indicates linkage between services and funding, i.e., cost per investigation, cost per student or number of days to complete investigation.)

	FY 2016 APPRO	FY 2016 ACTUAL	FY 2017 ESTIMATED	FY 2018 PROJECTED
1 Support as a percentage of total budget	7.00	7.00	7.00	7.00
2 Percentage Rate of Staff Trained	100.00	100.00	100.00	100.00

PROGRAM PERFORMANCE INDICATORS AND MEASURES

Program Data Collected in Accordance with the Mississippi Performance Budget and Strategic Planning Act of 1994

Mental Health - North Mississippi State Hospital (384-00)

2 - MI - SUPPORT SERVICES

Name of Agency	PROGRAM NAME			
3 Percentage Rate of Employee Turnover	5.00	2.40	5.00	5.00
4 Annual Employee Turnover Rate	30.00	29.00	30.00	25.00
5 Cost to implement identified improvements	1,000.00	0.00	1,000.00	1,000.00
6 Average annual satisfaction measurement	80.00	81.00	80.00	80.00
7 Average percentage of staff participating in training monthly	10.00	100.00	100.00	100.00
8 Percentage of programs in compliance with regulatory requirements	100.00	100.00	100.00	100.00
9 Average length of time from commitment order to admission (days)	4.00	3.00	4.00	4.00
10 Average number of governmental presentation per quarter	2.00	7.00	7.00	7.00

PROGRAM OUTCOMES: (This is the measure of the quality or effectiveness of the services provided by this program. This measure provides an assessment of the actual impact or public benefit of your agency's actions. This is the results produced, i.e., increased customer satisfaction by x% within a 12-month period, reduce the number of traffic fatalities due to drunk drivers within a 12-month period.

	FY 2016 APPRO	FY 2016 ACTUAL	FY 2017 ESTIMATED	FY 2018 PROJECTED
1 Operating costs per bed day	458.00	480.00	492.00	508.00
2 Total staff turnover rate	5.00	2.40	5.00	5.00
3 Number of staff recruited through SPB	25.00	27.00	25.00	25.00
4 Percentage of compliance with licensure and certification by the Department of Mental Health, CMS, The Joint Commission, and the Mississippi Department of Health.	99.00	100.00	99.00	99.00

PROGRAM 3% GENERAL FUND REDUCTION AND NARRATIVE EXPLANATION

Mental Health - North Mississippi State Hospital (384-00)

	Fiscal Year 2017 Funding			FY 2017 GF PERCENT REDUCED
	Total Funds	Reduced Amount	Reduced Funding Amount	

Program Name: (1) MI - INSTITUTIONAL CARE				
General	4,978,814	(149,364)	4,829,450	(3.00%)
State Support Special	395,388		395,388	
Federal				
Other Special	2,225,529		2,225,529	
TOTAL	7,599,731	(149,364)	7,450,367	

Narrative Explanation:

A 3% reduction in General Funds would mean that North Mississippi State Hospital would have to reduce staff. North Mississippi State Hospital complies with numerous federal and state regulations in order to maintain licensure and accreditation. A reduction of funds jeopardizes compliance and therefore threatens licensure as well as the continued safety and well-being of the patients of the hospital.

Program Name: (2) MI - SUPPORT SERVICES				
General	374,750	(11,242)	363,508	(3.00%)
State Support Special	29,760		29,760	
Federal				
Other Special	167,513		167,513	
TOTAL	572,023	(11,242)	560,781	

Narrative Explanation:

A 3% reduction in General Funds would mean that North Mississippi State Hospital would have to reduce staff. North Mississippi State Hospital complies with numerous federal and state regulations in order to maintain licensure and accreditation. A reduction of funds jeopardizes compliance and therefore threatens licensure as well as the continued safety and well-being of the patients of the hospital.

Program Name: (99) Summary of All Programs				
General	5,353,564	(160,606)	5,192,958	(3.00%)
State Support Special	425,148		425,148	
Federal				
Other Special	2,393,042		2,393,042	
TOTAL	8,171,754	(160,606)	8,011,148	

MISSISSIPPI BOARD OF MENTAL HEALTH MEMBERS

Mental Health - North Mississippi State Hospital (384-00)

Name of Agency

A. Explain Rate and manner in which board members are reimbursed:

Each Board member is entitled to one hundred and fifty dollars (\$ 150.00) per day and all actual and necessary expenses, including mileage as provided by law, incurred in the discharge of duties.

B. Estimated number of meetings FY 2017:

Twelve (12) regular board meetings

C. Names of Members	City, Town, Residence	Appointed By	Date of Appointment	Length of Term
1. George Harrison	Coffeenville, MS	Barbour	7- 1- 2010	7 Years
2. Manda Griffin, FNP	Houlka, MS	Barbour	7- 1- 2011	7 Years
3. J. Richard Barry, JD	Meridian, MS	Bryant	7- 1- 2012	7 Years
4. Teresa Mosley	Clinton, MS	Bryant	7- 1- 2013	7 Years
5. Robert Landrum	Ellisville, MS	Bryant	7- 1- 2014	7 Years
6. John Montgomery, DO	Ocean Springs, MS	Bryant	7- 1- 2014	7 Years
7. James Herzog, Ph.D.	Jackson, MS	Bryant	7- 1- 2015	7 Years
8. Sampat Shivangi, MD	Ridgeland, MS	Bryant	7- 1- 2016	7 Years

Identify Statutory Authority (Code Section or Executive Order Number)*

Mississippi Code Section 41-4-3

*If Executive Order, please attach copy.

**SCHEDULE B
CONTRACTUAL SERVICES**

Mental Health - North Mississippi State Hospital (384-00)

Name of Agency

MINOR OBJECT OF EXPENDITURE	(1) Actual Expenses FY Ending June 30, 2016	(2) Estimated Expenses FY Ending June 30, 2017	(3) Requested for FY Ending June 30, 2018
-----------------------------	--	---	--

A. Tuition, Rewards & Awards (61050xxx-61080xxx)			
61060000 Employee Training	23,420	26,000	26,000
61070000 Travel Related Registration	2,791	4,000	4,000
Total	26,211	30,000	30,000

B. Transportation & Utilities (61100xxx-61200xxx)			
61100000 Transportation of Goods	1,551	3,000	3,000
61200000 Utilities	225,840	250,000	250,000
Total	227,391	253,000	253,000

C. Public Information (61300xxx-61310xxx)			
61300000 Advertising & Public Information	1,279	3,000	3,000
Total	1,279	3,000	3,000

D. Rents (61400xxx-61490xxx)			
61420000 Equipment Rental	54,372	60,000	60,000
Total	54,372	60,000	60,000

E. Repairs & Service (61500xxx)			
61500000 Repair & Maintain Services	59,934	66,000	66,000
Total	59,934	66,000	66,000

F. Fees, Professional & Other Services (61600xxx-61699xxx)			
61600000 Inter-Agency Fees	94,818	2,000	2,000
61610000 Contract Worker PR	57,013	75,000	75,000
61652000 Construction Contract Services	1,053	2,000	2,000
61660000 Accounting & Financial Services	8,250	10,000	10,000
61680000 Medical Services	254,676	302,000	302,000
61690000 Fees & Services	417,248	481,000	481,000
Total	833,058	872,000	872,000

G. Other Contractual Services (61700xxx-61790xxx, 61900xxx)			
61700000 Insurance, Fees and Services	23,093	26,000	26,000
61710000 Membership Dues	39,969	43,000	43,000
61715000 Trade Subscriptions	1,177	2,000	2,000
61730000 Laundry, Dry Cleaning, Towel	83,379	90,000	90,000
61735000 Salvage, Demolition, Removal	29,896	35,000	35,000
61740000 Environmental Services	31	1,000	1,000

**SCHEDULE B
CONTRACTUAL SERVICES**

Mental Health - North Mississippi State Hospital (384-00)

Name of Agency

MINOR OBJECT OF EXPENDITURE	(1) Actual Expenses FY Ending June 30, 2016	(2) Estimated Expenses FY Ending June 30, 2017	(3) Requested for FY Ending June 30, 2018
61900000 Pcard Contractual	2,721	4,000	4,000
Total	180,266	201,000	201,000
H. Information Technology (6180xxx-61890xxx)			
61800000 Local Telephone - Outside Vendor	415	15,000	15,000
61803000 Long Distance Telephone - Outside Vendor		33,000	33,000
61818000 Cell Time - Outside Vendor	4,516	5,000	5,000
61824000 Satellite Voice - Outside Vendor	851	1,000	1,000
61839000 Sotware - Outside Vendor	34,570	45,000	45,000
61845000 Offsite Storage of IS Software & Data - Outside Vendor	1,401	6,000	6,000
61848000 Maintain IT Equipment - Outside Vendor	4,271	6,000	6,000
61850000 ITS Payments	62,825		
Total	108,849	111,000	111,000
I. Other (61910xxx-61990xxx)			
61965000 Prior Year Expense Contractual	3,127	4,000	4,000
Total	3,127	4,000	4,000
Grand Total <i>(Enter on Line 1-B of Form MBR-1)</i>	1,494,487	1,600,000	1,600,000
Funding Summary:			
General Funds	235,104		
State Support Special Funds	169,504	325,148	325,148
Federal Funds			
Other Special Funds	1,089,879	1,274,852	1,274,852
Total Funds	1,494,487	1,600,000	1,600,000

**SCHEDULE C
COMMODITIES**

Mental Health - North Mississippi State Hospital (384-00)

Name of Agency

MINOR OBJECT OF EXPENDITURE	(1) Actual Expenses FY Ending June 30, 2016	(2) Estimated Expenses FY Ending June 30, 2017	(3) Requested for FY Ending June 30, 2018
A. Maintenance & Constr. Materials & Supplies (62000xxx, 62015xxx)			
62015000 Bldg & Construction Mat	13,379	15,600	15,600
Total	13,379	15,600	15,600
B. Printing & Office Supplies & Materials (62010xxx, 62085xxx, 62100xxx, 62125xxx, 62400xxx)			
62010000 Book, Maps, Instr Mat	418	500	500
62085000 Office Supplies	8,231	9,600	9,600
62100000 Printing Supplies	994	1,200	1,200
62400000 Furniture and Equip	2,913	3,400	3,400
Total	12,556	14,700	14,700
C. Equipment Repair Parts, Supplies & Acces. (62050xxx, 62072xxx, 62110xxx, 62115xxx, 62120xxx, 62130xxx)			
62050000 Fuel	7,307	8,600	8,600
62072000 Shop Supplies	3,669	4,300	4,300
62110000 Parts -Heat/Cool/Other	4,639	5,400	5,400
62115000 Parts - Office/IT/Other	15,179	17,700	17,700
62120000 Parts - Veh & Other	1,417	1,700	1,700
62130000 Tires & Tubes	1,688	2,000	2,000
Total	33,899	39,700	39,700
D. Professional & Sci. Supplies and Materials (62025xxx, 62030xxx, 62070xxx, 62095xxx, 62105xxx)			
62025000 Educational Supplies	3,784	4,000	4,000
62070000 Lab and Medical Supplies	344,031	400,000	400,000
Total	347,815	404,000	404,000
E. Other Supplies & Materials (62005xxx, 62020xxx, 62035xxx, 62040xxx, 62045xxx, 62060xxx, 62065xxx, 62075xxx-62080xxx, 62090xxx, 62135xxx, 62140xxx, 62405xxx, 62415xxx, 62500xxx-62999xxx)			
62020000 Decals & Signs	702	800	800
62045000 Food for Persons	903	1,100	1,100
62060000 Janitorial & Clean	23,144	27,000	27,000
62065000 Kitchen, Cafe & Dining	636	800	800
62078000 Other Misc Supplies	1,662	2,000	2,000
62090000 Per Hygiene Supply	886	1,100	1,100
62135000 Uniforms & Apparel	5,812	6,800	6,800
62900000 Pcard Commodity	9,788	11,400	11,400
Total	43,533	51,000	51,000
Grand Total <i>(Enter on Line 1-C of Form MBR-1)</i>	451,182	525,000	525,000

**SCHEDULE C
COMMODITIES**

Mental Health - North Mississippi State Hospital (384-00)

Name of Agency

MINOR OBJECT OF EXPENDITURE	(1) Actual Expenses FY Ending June 30, 2016	(2) Estimated Expenses FY Ending June 30, 2017	(3) Requested for FY Ending June 30, 2018
-----------------------------	--	---	--

Funding Summary:			
General Funds	32		
State Support Special Funds	36,959	100,000	100,000
Federal Funds			
Other Special Funds	414,191	425,000	425,000
Total Funds	451,182	525,000	525,000

**SCHEDULE D-1
CAPITAL OUTLAY
OTHER THAN EQUIPMENT**

Mental Health - North Mississippi State Hospital (384-00)
Name of Agency _____

MINOR OBJECT OF EXPENDITURE	(1) Actual Expenses FY Ending June 30, 2016	(2) Estimated Expenses FY Ending June 30, 2017	(3) Requested for FY Ending June 30, 2018
-----------------------------	--	---	--

B. Buildings & Improvements (63100100)			
16100100 Buildings Contra Modified		1,000	1,000
16100100 New Roof on Patient Building			237,000
Total		1,000	238,000

Grand Total <i>(Enter on Line 1-D-1 of Form MBR-1)</i>	0	1000	238000
--	----------	-------------	---------------

Funding Summary:			
General Funds			237,000
State Support Special Funds			
Federal Funds			
Other Special Funds		1,000	1,000
Total Funds		1,000	238,000

**SCHEDULE D-2
CAPITAL OUTLAY EQUIPMENT**

Mental Health - North Mississippi State Hospital (384-00)

Name of Agency

EQUIPMENT BY ITEM	Act. FY Ending June 30, 2016		Est. FY Ending June 30, 2017		Req. FY Ending June 30, 2018	
	No. of Units	Total Cost	No. of Units	Total Cost	No. of Units	Total Cost

D. IS Equipment (DP & Telecommunications) (63200100)						
Edge Server	1	4,699			1	5,000
Total		4,699				5,000

F. Other Equipment (63200100)						
Air Compressor	1	805				
Riding Lawn Mower			1	9,000		
Ice Machine	1	3,500			1	4,000
Total		4,305		9,000		4,000

Grand Total <i>(Enter on Line 1-D-2 of Form MBR-1)</i>		9,004		9,000		9,000
--	--	--------------	--	--------------	--	--------------

Funding Summary:						
General Funds						
State Support Special Funds		4,699				
Federal Funds						
Other Special Funds		4,305		9,000		9,000
Total Funds		9,004		9,000		9,000

**SCHEDULE D-3
PASSENGER/WORK VEHICLES**

Mental Health - North Mississippi State Hospital (384-00)

Name of Agency

MINOR OBJECT OF EXPENDITURE	Vehicle Inventory June 30, 2016	Act. FY Ending June 30, 2016		Est. FY Ending June 30, 2017		Req. FY Ending June 30, 2018	
		No. of Units	Total Cost	No. of Units	Total Cost	No. of Units	Total Cost

A. Passenger & Work Vehicles (63300100)							
63300100 Van, Mid Size	3					1	24,000
Total (A)	3					1	24,000

GRAND TOTAL <i>(Enter on Line 1-D-3 of Form MBR-1)</i>							24,000
--	--	--	--	--	--	--	---------------

Funding Summary:			
General Funds			
State Support Special Funds			
Federal Funds			
Other Special Funds			24,000
Total Funds			24,000

**SCHEDULE D-4
WIRELESS COMMUNICATION DEVICES**

Mental Health - North Mississippi State Hospital (384-00)

 Name of Agency

MINOR OBJECT OF EXPENDITURE	Device Inventory June 30, 2016	Act. FY Ending June 30, 2016		Est. FY Ending June 30, 2017		Req. FY Ending June 30, 2018	
		No. of Devices	Actual Cost	No. of Devices	Estimated Cost	No. of Devices	Requested Cost

Grand Total <i>(Enter on Line 1-D-4 of Form MBR-1)</i>							
--	--	--	--	--	--	--	--

Funding Summary:							
General Funds							
State Support Special Funds							
Federal Funds							
Other Special Funds							
Total Funds							

SCHEDULE E
SUBSIDIES, LOANS & GRANTS

Mental Health - North Mississippi State Hospital (384-00)

Name of Agency

MINOR OBJECT OF EXPENDITURE	(1) Actual Expenses FY Ending June 30, 2016	(2) Estimated Expenses FY Ending June 30, 2017	(3) Requested for FY Ending June 30, 2018
-----------------------------	--	---	--

E. Other (67000xxx-67019xxx, 67021xxx-67199xxx, 67998xxx, 68500xxx-68860xxx, 70045xxx-70080xxx, 80000xxx-80500xxx)			
68515000 Transfer Out Other Funds	88,993	89,000	89,000
Total	88,993	89,000	89,000
Grand Total <i>(Enter on Line 1-E of Form MBR-1)</i>	88,993	89,000	89,000

Funding Summary:			
General Funds			
State Support Special Funds	30,024		
Federal Funds			
Other Special Funds	58,969	89,000	89,000
Total Funds	88,993	89,000	89,000

NARRATIVE
2018 BUDGET REQUEST

Mental Health - North Mississippi State Hospital (384-00)

Name of Agency

NARRATIVE JUSTIFICATION FOR FISCAL YEAR 2018 BUDGET - 384

I. A. PERSONAL SERVICES

New Positions (SPB Schedule A)

II. Funding for Existing Vacant Positions

A total of \$774,494 is requested for funding twelve (12) vacant positions. Included in this request is one (1) Physician, Senior, five (5) MH-Active Treatment Tech, ADV, three (3) Nurse I, one (1) Nurse IV, one (1) Director V, and one (1) Housekeeper Senior. Failure to approve this request would result in a diminished ability to properly care for the people we serve.

III. Upward Reallocations: (SPB Schedule B)

A total of \$19,068.00 is requested for two (2) upward reallocations. Included in this request is one (1) Social Work Supervisor, Institutional pin to a Social Worker V pin and one (1) Social Work Director, Institutional pin to a Social Work Supervisor pin.

Pin number 0043 – Social Word Supervisor Institutional to Social Worker V – A reallocation is requested for this position which is currently assigned to Institutional Care. This position is responsible for providing direct patient care and providing administrative support to the Social Work Director. This reallocation is requested to allow a smooth conversion with the change in the series not authorized for reclassification and to provide a career ladder for the incumbent to pursue.

Pin number 0041 – Social Work Director, Institutional to Social Worker Supervisor – A reallocation is requested for this position which is currently assigned to Institutional Care. This position is responsible for providing administrative supervision and direction to the social work department and for providing direct patient care and works under the direction of the Clinical Administrator. This reallocation is requested to allow a smooth conversion with the change in the series.

IV. Reclassification Information: (SPB Schedule C)

A total of \$19,436.00 is requested for two (2) reclassifications.

Included in this request is one (1) Social Worker I pin to be reclassified to a Social Worker III pin, and one (1) Social Worker I pin to be reclassified to a Social Worker IV pin.

V. Educational Benchmarks: (SPB Schedule D)

Total dollar amount requested for educational benchmarks: \$33,413.00

Additional Information:

A total of thirteen (13) Educational Benchmarks are requested which include four (4) for Certified Public Manager, four (4) for Human Resources Certification, three (3) for Master's Degree, and two (2) for Basic Supervisory Certification.

VI. Special Compensation / Experience Benchmarks (SPB Schedule E)

None

VII. Callback Pay (Currently Authorized) (SPB Schedule F)

NARRATIVE
2018 BUDGET REQUEST

Mental Health - North Mississippi State Hospital (384-00)

Name of Agency

None

VIII. Additional Compensation (Not Currently Authorized) (SPB Schedule G)

None

IX. FLSA Overtime Pay (SPB Schedule H-Authorized)

There is a total of \$230,677.00 requested for FLSA overtime pay currently authorized which is for Institutional Care. A total of 6,468 overtime hours are anticipated.

(SPB Schedule I-Not Authorized)

None

X. Position Status Change (SPB Schedule J)

None

XI. Standby Pay (SPB Schedule K)

Three (3) PINS will be utilizing a total of \$9,000.00 requested for Standby Pay currently authorized for Institutional Care, Program One.

2. TRAVEL:

North Mississippi State Hospital requests a total of \$ 23,000.00 in travel funds for FY2018. This amount represents an increase of \$ 4,750.00 (26.03%) for FY2018 over FY2017 authority.

These funds are used by Institutional Care and Support Services to enable professional staff to attend education workshops and seminars concerning the improvement of patient care and the enhancement of employee knowledge. North Mississippi State Hospital is located 3.5 hours from Jackson and in order to attend required meetings, training sessions and conferences there is an added cost for travel the day prior to Jackson in order to be on time for meeting starting in the morning.

a. Travel and Subsistence (In-State): An increase of \$ 4,665.00 (26.91%) is requested in this category for FY2018.

b. Travel and Subsistence (Out-of-State): An increase of \$ 85.00 (9.29%) is requested in this category for FY2018.

NARRATIVE
2018 BUDGET REQUEST

Mental Health - North Mississippi State Hospital (384-00)

Name of Agency

I. B. CONTRACTUAL SERVICES (SCHEDULE B):

North Mississippi State Hospital requests a total of \$ 1,600,000.00 for contractual services for FY2018. This amount represents no increase for FY2018 over FY2017 authority.

Included in this request are costs associated with the hospital's responsibility for five (5) buildings on the main campus with three (3) of these buildings being constructed during 1998-1999. As the facility physical plant ages, a significant amount of federal and state regulations governing the operations of institutional programs for the mentally ill place tremendous emphasis on physical environment standards as they relate to client safety, preventive maintenance and repair programs, and the general overall appearance of facility buildings and grounds. Funds in this category will be used to pay for services to repair or replace flooring, aging air and heating systems, outdated electrical wiring, drainage problems, original plumbing for water and gas and other similar repairs.

- a. Tuition, Rewards & Awards: No increase is requested in this category.
- b. Communications, Transportation & Utilities: No increase is requested in this category.
- c. Public Information: No increase is requested in this category.
- d. Rents: No increase is requested in this category.
- e. Repairs and Service: No increase is requested in this category.
- f. Fees, Professional & Other Services: No increase is requested in this category.
- g. Other Contractual Services: No increase is requested in this category.
- h. Data Processing: No increase is requested in this category.
- i. Other: No increase is requested in this category.

NARRATIVE
2018 BUDGET REQUEST

Mental Health - North Mississippi State Hospital (384-00)

Name of Agency

I. C. COMMODITIES (Schedule C):

North Mississippi State Hospital requests a total of \$ 525,000.00 for commodity items for FY2018. This amount represents no increase for FY2018 over FY2017 authority.

- a. Maintenance & Construction Materials & Supplies: No increase is requested in this category.
- b. Printing & Office Supplies & Materials: No increase is requested in this category.
- c. Equipment Repair and Replacement Parts: No increase is requested in this category.
- d. Professional & Scientific Supplies: No increase is requested in this category.
- e. Other Supplies and Materials: No increase is requested in this category.

I. D. CAPITAL OUTLAY:

1. CAPITAL OUTLAY OTHER THAN EQUIPMENT (SCHEDULE D 1)

North Mississippi State Hospital is requesting a total of \$ 238,000.00 for Capital Outlay – Other Than Equipment in FY2018. This amount represents an increase for FY2018 over FY2017 funding in the amount of \$ 237,000.00 which will be used for a new roof for the Patient Building which has reached the end of its expected life and is showing signs of deterioration from its age and exposure to the natural elements. This roof is original to the building and has never been replaced and therefore requires replacement.

NARRATIVE
2018 BUDGET REQUEST

Mental Health - North Mississippi State Hospital (384-00)

Name of Agency

2. CAPITAL OUTLAY - EQUIPMENT (SCHEDULE D 2)

A total of \$ 9,000.00 is requested in this category for FY 2018. This represents no change in authority for FY2018 over FY2017. These funds will be utilized for the implementation of Electronic Health Record equipment to meet meaningful use criteria for continued Medicare payments, replacement of computer equipment and electronics.

3. VEHICLES (SCHEDULE D 3)

A total of \$ 24,000.00 is requested for Capital Outlay – Vehicles FY2018. This amount represents the purchasing of one (1) replacement vehicle for patient transport. The request of \$ 24,000.00 (100.00%) is for the purchase of one (1) new mid-size van for the transport of North Mississippi State Hospital patients and will be utilized to replace a 2005 Dodge Caravan Van that has 130,616 miles on its odometer and is used weekly for patient transport and staff travel.

4. WIRELESS COMM. DEVICES (SCHEDULE D 4)

There is no request in this category for FY2018.

I. E. SUBSIDIES, LOANS, AND GRANTS (Schedule E):

North Mississippi State Hospital is requesting a total of \$ 89,000.00 for Subsidies, Loans & Grants in FY2018. This amount represents no increase for FY2018 over FY2017 authority.

SUMMARY OF OLMSTEAD DECISION AND HOUSE BILL 929 (2001 SESSION)

The U.S. Supreme Court heard the *Olmstead v. L.C. and E.W.* case on April 21, 1999. The suit had been brought by two women with both mental retardation and psychiatric conditions who were patients in a state psychiatric hospital in Georgia. Their treating professionals agreed that the women should be served in community programs, but no slots were available for them. Under Title II of the Americans with Disabilities Act, States are required to place persons with mental disabilities in community settings rather than in institutions when the State's treatment professionals have determined that community placement is appropriate.

The Supreme Court, in their opinion in the *Olmstead* decision, stated "States are required to provide community-based treatment for persons with mental disabilities when the State's treatment professionals determine that such placement is appropriate, the affected persons do not oppose such treatment, and the placement can be reasonably accommodated, taking into account the resources available to the State and the needs of others with mental disabilities."

The Supreme Court held that the states' need to maintain a range of facilities for the care and treatment of individuals with diverse mental disabilities must be recognized. In determining whether a state can successfully assert that providing community based services to an individual would fundamentally alter the state's service delivery system, the Supreme Court held that courts must consider not only the cost of providing community based care to the litigants, but also the state's obligation to administer services to others with mental disabilities in an equitable manner. Justice Ginsberg wrote that if the state demonstrates that it has a "comprehensive, effectively working plan for placing qualified persons with mental disabilities in less restrictive settings, and a waiting list that moves at a reasonable pace not controlled by the State's endeavors to keep its institutions fully populated," an individual cannot skip to the top of the waiting list by filing a lawsuit to obtain community services. This would not be considered a reasonable modification.

The Mississippi Legislature passed, during the 2001 legislative session, and sent to the Governor House Bill 929 "An act to provide for the development of a proposed comprehensive state plan for the provision of services to persons with disabilities in the State of

NARRATIVE
2018 BUDGET REQUEST

Mental Health - North Mississippi State Hospital (384-00)

Name of Agency

Mississippi in the most integrated setting appropriate; to provide issues for consideration in the development of the proposed plan; to provide principles for consideration in the development of the proposed plan; and for related purposes.” Section 1 of that bill, signed by the Governor, reads:

“The State of Mississippi is committed to providing options to persons with disabilities and families that include members who are persons with disabilities for services to be provided in the most integrated setting appropriate. The State of Mississippi is further committed to developing a comprehensive plan to address needs, service options, opportunities and service settings appropriate for persons with disabilities and families that include persons with disabilities so that they may participate in community life to the greatest extent that is possible and that they desire.”

In order to receive needed medical services, persons with mental disabilities must, because of those disabilities, give up participation in community life they could enjoy given reasonable accommodations, while persons without mental disabilities can receive the medical services they need without similar sacrifice. In the decision the court also stated that some individuals, like L. C. and E. W. in prior years, may need institutional care from time to time to stabilize acute psychiatric symptoms.

**OUT-OF-STATE TRAVEL
FISCAL YEAR 2018**

Mental Health - North Mississippi State Hospital (384-00)

Name of Agency

Note: All expenditures recorded on this form must be totaled and said total must agree with the out-of-state travel amount indicated for FY 2016 on Form Mbr-1, line 1.A.2.b.

Employee's Name	Destination	Purpose	Travel Cost	Funding Source
Lippincott, Ken	New Orleans, LA	MPHP Strategic Planning Meeting	949	6236400000
Milev, Dilyana	Las Vegas, NV	2015 AACP Encore Confernce	211	2238400000
Vance, Helen	Nashville, TN	CRS Meeting	472	2238400000
Total Out of State Cost			\$ 1,632	

FEES, PROFESSIONAL AND OTHER SERVICES

Mental Health - North Mississippi State Hospital (384-00)

Name of Agency

TYPE OF FEE AND NAME OF VENDOR	Retired w/ PERS	(1) Actual Expenses FY Ending June 30, 2016	(2) Estimated Expenses FY Ending June 30, 2017	(3) Requested Expenses FY Ending June 30, 2018	Fund Source
61600000 Inter-Agency Fees					
Dept of Finanace & Admin/MMRS <i>Comp. Rate: \$ 6,275/month</i>	No	75,768			33384
Dept of Public Safety/Back Ground Search <i>Comp. Rate: \$ 125/month</i>	No	1,300	2,000	2,000	33384
Office of the State Auditor/Auditing <i>Comp. Rate: \$ 950/year</i>	No	950			33384
State Personnel Board/PIN Costs <i>Comp. Rate: \$ 1,400/month</i>	No	16,800			33384
Total 61600000 Inter-Agency Fees		94,818	2,000	2,000	
61610000 Contract Worker PR					
Ashton Patterson/MHT <i>Comp. Rate: \$ 10.00/hour</i>	No	7,833	10,000	10,000	33384
Doris Barry/MHT <i>Comp. Rate: \$ 10.00/hour</i>	No	6,193	10,000	10,000	33384
Jay Pickler/Maintenance <i>Comp. Rate: \$ 7.50/hour</i>	No	6,607	7,500	7,500	33384
Pat Robbins/Nurse <i>Comp. Rate: \$ 25.00/hour</i>	No	13,383	20,000	20,000	33384
Shelley Reason/Housekeeping <i>Comp. Rate: \$ 7.50/hour</i>	No	6,629	7,500	7,500	33384
Terry Harvell/Nurse <i>Comp. Rate: \$ 25.00/hour</i>	Yes	16,368	20,000	20,000	33384
Total 61610000 Contract Worker PR		57,013	75,000	75,000	
61652000 Construction Contract Services					
Westmoreland Glass Company/Glass <i>Comp. Rate: \$ 100/Month</i>	No	1,053	2,000	2,000	33384
Total 61652000 Construction Contract Services		1,053	2,000	2,000	
61660000 Accounting & Financial Services					
Horne LLP/Cost Report Preperation <i>Comp. Rate: \$ 8,250/year</i>	No	8,250	10,000	10,000	33384
Total 61660000 Accounting & Financial Services		8,250	10,000	10,000	
61680000 Medical Services					
Bounds, Jared/Contract Pharmacist <i>Comp. Rate: \$ 450/hour</i>	No	5,225	7,000	7,000	33384
Butts, Jamie/Contract Pharmacist <i>Comp. Rate: \$ 50/hour</i>	No	3,150	5,000	5,000	33384
Coniglio LLC/Psycholocal Services <i>Comp. Rate: \$ 5,500/month</i>	No	66,000	66,000	66,000	33384
Counseling Solutions/Psycholocal Services					

FEES, PROFESSIONAL AND OTHER SERVICES

Mental Health - North Mississippi State Hospital (384-00)

Name of Agency					
TYPE OF FEE AND NAME OF VENDOR	Retired w/ PERS	(1) Actual Expenses FY Ending June 30, 2016	(2) Estimated Expenses FY Ending June 30, 2017	(3) Requested Expenses FY Ending June 30, 2018	Fund Source
<i>Comp. Rate: \$ 25/hour</i> Friloux, Brian/MOD Services & Preceptor	No	15,550	18,000	18,000	33384
<i>Comp. Rate: \$ 1,000/week</i> Grammar, Jerry/Pastor/Counseling Services	No	28,000	32,000	32,000	33384
<i>Comp. Rate: \$ 100/week</i> Harris, Keona/Psychological Services	No	5,200	7,000	7,000	33384
<i>Comp. Rate: \$ 25/hour</i> Milev, Dilyana N./Psychiatric Services	No	14,850	18,000	18,000	33384
<i>Comp. Rate: \$ 650/month</i> Newman, Catina/Contract Pharmacist	No	7,177	8,000	8,000	33384
<i>Comp. Rate: \$ 450/hour</i> North MS Medical Center/Medical Services	No	375	2,000	2,000	33384
<i>Comp. Rate: \$ 5,500/month</i> Premier Radiology/Xray Services	No	54,734	70,000	70,000	33384
<i>Comp. Rate: \$ 750/month</i> Rish, James/MOD Services	No	722	2,000	2,000	33384
<i>Comp. Rate: \$ 1,000/week</i> Stevens, Jill/Contract Pharmacist	No	8,000	11,000	11,000	33384
<i>Comp. Rate: \$ 50/hour</i> Symphony Diagnostic Services/Medical Treatments	No	3,850	5,000	5,000	33384
<i>Comp. Rate: \$ 625/month</i> Taylor, Jessie Roma/MOD Services	No	6,843	8,000	8,000	33384
<i>Comp. Rate: \$ 1,000/week</i> Ungo, Kamie/MOD Services & Preceptor	No	13,000	17,000	17,000	33384
<i>Comp. Rate: \$ 1,000/week</i>	No	22,000	26,000	26,000	33384
Total 61680000 Medical Services		254,676	302,000	302,000	
61690000 Fees & Services					
<i>Comp. Rate: \$ 10/hour</i> Alanna Temple/Document Scanning	No	125	500	500	33384
<i>Comp. Rate: \$ 250/month</i> Comcast/Cable for Patients	No	2,965	3,500	3,500	33384
<i>Comp. Rate: \$ 150/month</i> Harden Enterprises/Printing Services	No	1,730	2,500	2,500	33384
<i>Comp. Rate: \$ 30/hour</i> Heather Pike/Computer Programming	No	325	1,500	1,500	33384
<i>Comp. Rate: \$ 10/hour</i> Jennifer Lesley/Document Scanning	No	9,043	10,000	10,000	33384
<i>Comp. Rate: \$ 30/hour</i> K.L. Estes/Computer Programming	No	6,531	7,500	7,500	33384
<i>Comp. Rate: \$ 25/month</i> Lazarus Sykes/Patient Haircuts	No	300	1,000	1,000	33384
<i>Comp. Rate: \$ 100/month</i> Magnolia Clipping Service/Article Clipping	No	995	2,000	2,000	33384

FEES, PROFESSIONAL AND OTHER SERVICES

Mental Health - North Mississippi State Hospital (384-00)

Name of Agency

TYPE OF FEE AND NAME OF VENDOR	Retired w/ PERS	(1) Actual Expenses FY Ending June 30, 2016	(2) Estimated Expenses FY Ending June 30, 2017	(3) Requested Expenses FY Ending June 30, 2018	Fund Source
McKesson Health Solutions/Pyxis Equipment Rental <i>Comp. Rate: \$ 30/month</i>	No	352	500	500	33384
Michelle Hill-Hereford/Beautician <i>Comp. Rate: \$ 100/month</i>	No	1,005	2,000	2,000	33384
MS State Dept of Health/Licensure <i>Comp. Rate: \$ 1,000/year</i>	No	1,000	1,000	1,000	33384
Rhonda K. Brown/Computer Programming <i>Comp. Rate: \$ 30/hour</i>	No	600	1,500	1,500	33384
State Systems/Alarm Inspections <i>Comp. Rate: \$ 350/quarter</i>	No	1,389	1,500	1,500	33384
Valley Services/Patient Meals <i>Comp. Rate: \$ 33,500/month</i>	No	386,518	438,000	438,000	33384
XPIO Health, Inc/Computer Programming <i>Comp. Rate: \$ 375/month</i>	No	4,370	8,000	8,000	33384
Total 61690000 Fees & Services		417,248	481,000	481,000	
GRAND TOTAL		833,058	872,000	872,000	

VEHICLE PURCHASE DETAILS

Mental Health - North Mississippi State Hospital (384-00)

Name of Agency

Year	Model	Person(s) Assigned To	Vehicle Purpose/Use	Replacement Or New?	FY2018 Req. Cost
Work Vehicles					
63300100 Van, Mid Size					
2005	Dodge	Pool - Joe M. Rials	Patient transport	Replacement	24,000
TOTAL					24,000
TOTAL VEHICLE REQUEST					24,000

**VEHICLE INVENTORY
AS OF JUNE 30, 2016**

Mental Health - North Mississippi State Hospital (384-00)

Name of Agency

Vehicle Type	Vehicle Description	Model Year	Model	Person(s) Assigned To	Purpose/Use	Tag Number	Mileage on 6-30-2016	Average Miles per Year	Replacement Proposed	
									FY2017	FY2018
P	Van, Full Size	1999	Dodge	Pool - Joe M. Rials	Patient Transport	GO9233	91,103	1,000		
W	Truck, Pick Up	2000	GMC	Maintenance - Jeff Jones	Patient Transport - Maintenance	GO13081	172,007	1,000		
P	Van, Mid Size	2005	Dodge	Pool - Joe M. Rials	Patient Transport	GO32733	130,616	2,000		Y
W	1 Ton Truck	2005	Dodge	Maintenance - Jeff Jones	Patient Transport - Maintenance	GO32954	75,719	1,000		
P	Van, Mid Size	2009	Dodge	Pool - Joe M. Rials	Patient Transport	GO51193	104,273	10,000		
P	Auto, Sedan	2011	Chevrolet	Director - Paul Callens	Administrative	GO57436	31,498	50,000		
W	Truck, Pick Up	2011	Ford	Maintenance - Jeff Jones	Patient Transport - Maintenance	GO57434	22,398	4,000		
P	Van, Mid Size	2012	Dodge	Pool - Joe M. Rials	Patient Transport	GO60061	66,664	9,000		
P	Auto - Security	2013	Chevrolet	Security - Gregg Sappington	Patient Transport - Security	GO63484	41,906	14,000		

**VEHICLE POOL MEMBER LIST
2018 BUDGET REQUEST**

Mental Health - North Mississippi State Hospital (384-00)

Name of Agency

North Mississippi State Hospital
2018 Budget Request
Vehicle Listing & Users

1999 Dodge Van - 12 Passenger Van
Pool
GO9233

1 CALLENS PAUL A MH-INSTITUTIONAL DIRECTOR
3 LYONS HOLLIS GRAHAM ADMIN ASSISTANT V
5 STEGALL SARAH JO DIVISION DIRECTOR I
7 LIPPINCOTT CHARLES KENNETH CLINICAL DIRECTOR
9 RIALS JOE MCCARLEY BUREAU DIRECTOR II
10 JONES LISA LINNETT ADMIN ASSISTANT III
11 PITTMAN ERIC LYLE PHARMACIST III
12 WALTON KATRINKA SUE NURSE IV
13 MILEV DILYANA NENCHEVA PHYSICIAN, SENIOR
14 GARRISON ANDREA KOOSNE PHYSICIAN, SENIOR
15 JACKSON TIJWANA LATOYA MH-ATT ADVANCED
18 CRIDER JOYCE W NURSE III
20 GUIN CHRISTOPHER NURSE I
22 LUNN SHEILA H NURSE II
25 WILSON TINA RENEE NURSE I
26 RAY JENNIFER RENEE NURSE I
30 VANCE CATHERINE LEANNE NURSE I
32 ROBERTS LISA NURSE III
33 PHILLIPS SHIRLEY J NURSE III
34 JENKINS YVETTE MONIQUE NURSE III
35 ROSSI JENNIFER EARL NURSE III
37 VANCE HELEN L BUREAU DIRECTOR I
38 WALKER LINDA BEHAVIORIAL HEALTH SPECIALIST II
39 TRIPLETT THERESHA M BEHAVIORIAL HEALTH SPECIALIST II
40 PHYFFER DANA LETRICE DIVISION DIRECTOR I
41 WUICHET DEBRA DIANN SOCIAL WORK DIRECTOR INST.
43 OWENS STEPHANY MACHELLE SOCIAL WORK SUPERVISOR INST.
45 BOWEN GUY SHERROD MH-RECREATION THERAPIST I
46 EVANS TERRANCE DEMOND MH-ATT, ADVANCED
48 BETHAY MICHAEL DEWET MH-ATT
49 CAYSON SAMUEL BERNARD MH-ATT, ADVANCED
50 COLE TERRY WAYNE MH-ATT, TRAINEE
53 HESTER MELINDA JOYCE PHARMACIST TECHNICIAN
54 EZELL FELESSIA M MH-ATT, ADVANCED
56 STONE JERMORRIS HAKEEN MH-ATT
58 TRIPLETT TANDEKA FANSHON MH-ATT, TRAINEE
59 HURD KENYATTA DEWAYNE MH-ATT, ADVANCED
61 HAYNES ARIEL ISREAL MH-ATT
63 MILLER LAQUESHA CHANISE MH-ATT, TRAINEE
64 STANFIELD KIMBERLY DEESE MH-ATT
65 BLACK ALEXANDER MH-ATT, ADVANCED
66 HOPPER MONICA LYNN MH-ATT, ADVANCED
68 THOMAS GEORGE SAPADA MH-ATT, TRAINEE
69 TURNER GHON ADOLPH MH-ATT
71 AKINS JIMMY LEE MH-ATT, ADVANCED
73 GRAMMER RHONDA LEE VOCATIONAL TRAINING INSTRUCTOR
75 KING KAHRENSA DIANE MH-ATT, TRAINEE
76 KING LISA DAWN VOCATIONAL TRAINING INSTRUCTOR
77 BARKLEY BENECIA DAWN MH-ATT
78 RICHARDSON KIMBERLEE MH-ATT, ADVANCED
79 SHANNON DOROTHY M MH-ATT, ADVANCED
80 MICHAEL KATHY NADARA BUREAU DIRECTOR I
81 BRYSON SHIRLEY A ADMIN ASSISTANT III
83 RIDDLE ANNIECE ADMIN ASSISTANT III
85 BRITT JOEY E DMH-CAMPUS POLICE OFFICER

**VEHICLE POOL MEMBER LIST
2018 BUDGET REQUEST**

Mental Health - North Mississippi State Hospital (384-00)

Name of Agency

86 RAWSON ROBERT LEE DMH-CAMPUS POLICE OFFICER
88 HARGETT ERNEST JAY DMH-CAMPUS POLICE OFFICER
89 JENNINGS RAY E DMH-CAMPUS POLICE OFFICER
90 ARMSTRONG SOMMER ELIZABETH DIRECTOR V
92 GRIST JOE THERRALL DIVISION DIRECTOR I
93 WILHITE JAMES MURRAY SYSTEMS MANAGER I
94 JONES JEFFREY ALLAN PHYSICAL PLANT, DIRECTOR
95 EDWARDS SHERRY E HOUSEKEEPER SENIOR
97 WRIGHT BRYAN LYNELL MH-ATT, TRAINEE
99 SINCLAIR ANNA GRACE NURSE III
100 LYONS ELIZABETH ANNE ADMIN ASSISTANT V
101 ALLRED MICHELLE SHEA PHARMACIST TECHNICIAN
111 GRACE BRIAN L MH-ATT
113 ROWLAND DENNIS L NURSE PRACTITIONER
114 MARTIN RANDY PAUL MH-ATT, TRAINEE
118 HESTER JAMES LENARD FACILITIES MAINT SUPERVISOR
119 BALL LYNDA MH-ATT
132 GARMON SANDRA MARIA SOCIAL WORKER I
136 RUTH STARLA SOCIAL WORKER I
152 MCDANIEL GERI K ADMIN ASSISTANT III
170 GRIFFIN MICHAEL EDWARD FACILITIES MAINT SUPERVISOR
188 WHITTEN KERRY LANE DMH-CAMPUS POLICE, ASST CHIEF
190 AGNEW AUNDR A DORKESHA PERSONNEL OFFICER II
288 BOZEK CHRISTOPHER M. SYSTEMS MANAGER I
294 SAPPINGTON DERRELL CREGG DIVISION DIRECTOR II
296 BROCK ZACHARY RAY MH-ATT
298 ALLEN ROBERT CRAIG PROJECTS OFFICER IV, SPECIAL
312 GIBSON BRENDA JANETTE NURSE III
314 CAMPBELL MARGARET ANN NURSE III
331 GRAHAM NANCY ANN NURSE III
343 JACK CHRISTY LYNN MH-RECREATION THERAPIST I
344 GILDEA SUSIE DIANE NURSE III
349 HENRY DONNA BESS NURSE III
353 WALKER SHONEEL LENISE ADMIN ASSISTANT V
362 YAGER COURTNEY HOPE NURSE III
366 JAMISON PATRICK LAMOND MH-ATT ADVANCED
368 ORSBORN ANGELA JEAN NURSE PRACTITIONER
369 ARMSTRONG CAROL ANITA BRANCH DIRECTOR II
370 HALL DEBORAH MARIE DIVISION DIRECTOR II
381 WINDOM GREGORY LAMAR MH-ATT ADVANCED
383 DAVIS MATTHEW ADAMS WAREHOUSE MANAGER II
385 HUTCHINSON BRANDON WESLEY NURSE II
390 OLSON KURTIS DMH-CAMPUS POLICE OFFICER
393 BROWN TIA NATEE MH-ATT, TRAINEE
394 LEWIS ROBERT PAUL MH-ATT ADVANCED

2005 Dodge Van - 7 Passenger Van

Pool

GO32733

1 CALLENS PAUL A MH-INSTITUTIONAL DIRECTOR
3 LYONS HOLLIS GRAHAM ADMIN ASSISTANT V
5 STEGALL SARAH JO DIVISION DIRECTOR I
7 LIPPINCOTT CHARLES KENNETH CLINICAL DIRECTOR
9 RIALS JOE MCCARLEY BUREAU DIRECTOR II
10 JONES LISA LINNETT ADMIN ASSISTANT III
11 PITTMAN ERIC LYLE PHARMACIST III
12 WALTON KATRINKA SUE NURSE IV
13 MILEV DILYANA NENCHEVA PHYSICIAN, SENIOR
14 GARRISON ANDREA KOOSNE PHYSICIAN, SENIOR
15 JACKSON TIJWANA LATOYA MH-ATT ADVANCED
18 CRIDER JOYCE W NURSE III
20 GUIN CHRISTOPHER NURSE I
22 LUNN SHEILA H NURSE II

**VEHICLE POOL MEMBER LIST
2018 BUDGET REQUEST**

Mental Health - North Mississippi State Hospital (384-00)

Name of Agency

25 WILSON TINA RENEE NURSE I
26 RAY JENNIFER RENEE NURSE I
30 VANCE CATHERINE LEANNE NURSE I
32 ROBERTS LISA NURSE III
33 PHILLIPS SHIRLEY J NURSE III
34 JENKINS YVETTE MONIQUE NURSE III
35 ROSSI JENNIFER EARL NURSE III
37 VANCE HELEN L BUREAU DIRECTOR I
38 WALKER LINDA BEHAVIORIAL HEALTH SPECIALIST II
39 TRIPLETT THERESHA M BEHAVIORIAL HEALTH SPECIALIST II
40 PHYFER DANA LETRICE DIVISION DIRECTOR I
41 WUICHET DEBRA DIANN SOCIAL WORK DIRECTOR INST.
43 OWENS STEPHANY MACHELLE SOCIAL WORK SUPERVISOR INST.
45 BOWEN GUY SHERRON MH-RECREATION THERAPIST I
46 EVANS TERRANCE DEMOND MH-ATT, ADVANCED
48 BETHAY MICHAEL DEWET MH-ATT
49 CAYSON SAMUEL BERNARD MH-ATT, ADVANCED
50 COLE TERRY WAYNE MH-ATT, TRAINEE
53 HESTER MELINDA JOYCE PHARMACIST TECHNICIAN
54 EZELL FELESSIA M MH-ATT, ADVANCED
56 STONE JERMORRIS HAKEEN MH-ATT
58 TRIPLETT TANDEKA FANSHON MH-ATT, TRAINEE
59 HURD KENYATTA DEWAYNE MH-ATT, ADVANCED
61 HAYNES ARIEL ISREAL MH-ATT
63 MILLER LAQUESHA CHANISE MH-ATT, TRAINEE
64 STANFIELD KIMBERLY DEESE MH-ATT
65 BLACK ALEXANDER MH-ATT, ADVANCED
66 HOPPER MONICA LYNN MH-ATT, ADVANCED
68 THOMAS GEORGE SAPADA MH-ATT, TRAINEE
69 TURNER GHON ADOLPH MH-ATT
71 AKINS JIMMY LEE MH-ATT, ADVANCED
73 GRAMMER RHONDA LEE VOCATIONAL TRAINING INSTRUCTOR
75 KING KAHRENSA DIANE MH-ATT, TRAINEE
76 KING LISA DAWN VOCATIONAL TRAINING INSTRUCTOR
77 BARKLEY BENECIA DAWN MH-ATT
78 RICHARDSON KIMBERLEE MH-ATT, ADVANCED
79 SHANNON DOROTHY M MH-ATT, ADVANCED
80 MICHAEL KATHY NADARA BUREAU DIRECTOR I
81 BRYSON SHIRLEY A ADMIN ASSISTANT III
83 RIDDLE ANNIECE ADMIN ASSISTANT III
85 BRITT JOEY E DMH-CAMPUS POLICE OFFICER
86 RAWSON ROBERT LEE DMH-CAMPUS POLICE OFFICER
88 HARGETT ERNEST JAY DMH-CAMPUS POLICE OFFICER
89 JENNINGS RAY E DMH-CAMPUS POLICE OFFICER
90 ARMSTRONG SOMMER ELIZABETH DIRECTOR V
92 GRIST JOE THERRALL DIVISION DIRECTOR I
93 WILHITE JAMES MURRAY SYSTEMS MANAGER I
94 JONES JEFFREY ALLAN PHYSICAL PLANT, DIRECTOR
95 EDWARDS SHERRY E HOUSEKEEPER SENIOR
97 WRIGHT BRYAN LYNELL MH-ATT, TRAINEE
99 SINCLAIR ANNA GRACE NURSE III
100 LYONS ELIZABETH ANNE ADMIN ASSISTANT V
101 ALLRED MICHELLE SHEA PHARMACIST TECHNICIAN
111 GRACE BRIAN L MH-ATT
113 ROWLAND DENNIS L NURSE PRACTITIONER
114 MARTIN RANDY PAUL MH-ATT, TRAINEE
118 HESTER JAMES LENARD FACILITIES MAINT SUPERVISOR
119 BALL LYNDA MH-ATT
132 GARMON SANDRA MARIA SOCIAL WORKER I
136 RUTH STARLA SOCIAL WORKER I
152 MCDANIEL GERI K ADMIN ASSISTANT III
170 GRIFFIN MICHAEL EDWARD FACILITIES MAINT SUPERVISOR
188 WHITTEN KERRY LANE DMH-CAMPUS POLICE, ASST CHIEF
190 AGNEW AUNDRY DORKESHA PERSONNEL OFFICER II
288 BOZEK CHRISTOPHER M. SYSTEMS MANAGER I

**VEHICLE POOL MEMBER LIST
2018 BUDGET REQUEST**

Mental Health - North Mississippi State Hospital (384-00)

Name of Agency

294 SAPPINGTON DERRELL CREGG DIVISION DIRECTOR II
296 BROCK ZACHARY RAY MH-ATT
298 ALLEN ROBERT CRAIG PROJECTS OFFICER IV,SPECIAL
312 GIBSON BRENDA JANETTE NURSE III
314 CAMPBELL MARGARET ANN NURSE III
331 GRAHAM NANCY ANN NURSE III
343 JACK CHRISTY LYNN MH-RECREATION THERAPIST I
344 GILDEA SUSIE DIANE NURSE III
349 HENRY DONNA BESS NURSE III
353 WALKER SHONEEL LENISE ADMIN ASSISTANT V
362 YAGER COURTNEY HOPE NURSE III
366 JAMISON PATRICK LAMOND MH-ATT ADVANCED
368 ORSBORN ANGELA JEAN NURSE PRACTITIONER
369 ARMSTRONG CAROL ANITA BRANCH DIRECTOR II
370 HALL DEBORAH MARIE DIVISION DIRECTOR II
381 WINDOM GREGORY LAMAR MH-ATT ADVANCED
383 DAVIS MATTHEW ADAMS WAREHOUSE MANAGER II
385 HUTCHINSON BRANDON WESLEY NURSE II
390 OLSON KURTIS DMH-CAMPUS POLICE OFFICER
393 BROWN TIA NATEE MH-ATT, TRAINEE
394 LEWIS ROBERT PAUL MH-ATT ADVANCED

2009 Dodge Van - 7 Passenger Van
Pool
GO51193

1 CALLENS PAUL A MH-INSTITUTIONAL DIRECTOR
3 LYONS HOLLIS GRAHAM ADMIN ASSISTANT V
5 STEGALL SARAH JO DIVISION DIRECTOR I
7 LIPPINCOTT CHARLES KENNETH CLINICAL DIRECTOR
9 RIALS JOE MCCARLEY BUREAU DIRECTOR II
10 JONES LISA LINNETT ADMIN ASSISTANT III
11 PITTMAN ERIC LYLE PHARMACIST III
12 WALTON KATRINKA SUE NURSE IV
13 MILEV DILYANA NENCHEVA PHYSICIAN, SENIOR
14 GARRISON ANDREA KOOSNE PHYSICIAN, SENIOR
15 JACKSON TIJWANA LATOYA MH-ATT ADVANCED
18 CRIDER JOYCE W NURSE III
20 GUIN CHRISTOPHER NURSE I
22 LUNN SHEILA H NURSE II
25 WILSON TINA RENEE NURSE I
26 RAY JENNIFER RENEE NURSE I
30 VANCE CATHERINE LEANNE NURSE I
32 ROBERTS LISA NURSE III
33 PHILLIPS SHIRLEY J NURSE III
34 JENKINS YVETTE MONIQUE NURSE III
35 ROSSI JENNIFER EARL NURSE III
37 VANCE HELEN L BUREAU DIRECTOR I
38 WALKER LINDA BEHAVIORIAL HEALTH SPECIALIST II
39 TRIPLETT THERESHA M BEHAVIORIAL HEALTH SPECIALIST II
40 PHYFER DANA LETRICE DIVISION DIRECTOR I
41 WUICHET DEBRA DIANN SOCIAL WORK DIRECTOR INST.
43 OWENS STEPHANY MACHELLE SOCIAL WORK SUPERVISOR INST.
45 BOWEN GUY SHERROD MH-RECREATION THERAPIST I
46 EVANS TERRANCE DEMOND MH-ATT, ADVANCED
48 BETHAY MICHAEL DEWET MH-ATT
49 CAYSON SAMUEL BERNARD MH-ATT, ADVANCED
50 COLE TERRY WAYNE MH-ATT, TRAINEE
53 HESTER MELINDA JOYCE PHARMACIST TECHNICIAN
54 EZELL FELESSIA M MH-ATT, ADVANCED
56 STONE JERMORRIS HAKEEN MH-ATT
58 TRIPLETT TANDEKA FANSHON MH-ATT, TRAINEE
59 HURD KENYATTA DEWAYNE MH-ATT, ADVANCED
61 HAYNES ARIEL ISREAL MH-ATT

**VEHICLE POOL MEMBER LIST
2018 BUDGET REQUEST**

Mental Health - North Mississippi State Hospital (384-00)

Name of Agency

63 MILLER LAQUESHA CHANISE MH-ATT, TRAINEE
64 STANFIELD KIMBERLY DEESE MH-ATT
65 BLACK ALEXANDER MH-ATT, ADVANCED
66 HOPPER MONICA LYNN MH-ATT, ADVANCED
68 THOMAS GEORGE SAPADA MH-ATT, TRAINEE
69 TURNER GHON ADOLPH MH-ATT
71 AKINS JIMMY LEE MH-ATT, ADVANCED
73 GRAMMER RHONDA LEE VOCATIONAL TRAINING INSTRUCTOR
75 BETHAY MICHAEL DEWEY MH-ATT, TRAINEE
76 KING LISA DAWN VOCATIONAL TRAINING INSTRUCTOR
77 BARKLEY BENEZIA DAWN MH-ATT
78 RICHARDSON KIMBERLEE MH-ATT, ADVANCED
79 SHANNON DOROTHY M MH-ATT, ADVANCED
80 MICHAEL KATHY NADARA BUREAU DRIECTOR I
81 BRYSON SHIRLEY A ADMIN ASSISTANT III
83 RIDDLE ANNIECE ADMIN ASSISTANT III
85 BRITT JOEY E DMH-CAMPUS POLICE OFFICER
86 RAWSON ROBERT LEE DMH-CAMPUS POLICE OFFICER
88 HARGETT ERNEST JAY DMH-CAMPUS POLICE OFFICER
89 JENNINGS RAY E DMH-CAMPUS POLICE OFFICER
90 ARMSTRONG SOMMER ELIZABETH DIRECTOR V
92 GRIST JOE THERALL DIVISION DIRECTOR I
93 WILHITE JAMES MURRAY SYSTEMS MANAGER I
94 JONES JEFFREY ALLAN PHYSICAL PLANT, DIRECTOR
95 EDWARDS SHERRY E HOUSEKEEPER SENIOR
97 WRIGHT BRYAN LYNELL MH-ATT, TRAINEE
99 SINCLAIR ANNA GRACE NURSE III
100 LYONS ELIZABETH ANNE ADMIN ASSISTANT V
101 ALLRED MICHELLE SHEA PHARMACIST TECHNICIAN
111 GRACE BRIAN L MH-ATT
113 ROWLAND DENNIS L NURSE PRACTITIONER
114 MARTIN RANDY PAUL MH-ATT, TRAINEE
118 HESTER JAMES LENARD FACILITIES MAINT SUPERVISOR
119 BALL LYNDA MH-ATT
132 GARMON SANDRA MARIA SOCIAL WORKER I
136 RUTH STARLA SOCIAL WORKER I
152 MCDANIEL GERI K ADMIN ASSISTANT III
170 GRIFFIN MICHAEL EDWARD FACILITIES MAINT SUPERVISOR
188 WHITTEN KERRY LANE DMH-CAMPUS POLICE, ASST CHIEF
190 AGNEW AUNDRA DORKESHA PERSONNEL OFFICER II
288 BOZEK CHRISTOPHER M. SYSTEMS MANAGER I
294 SAPPINGTON DERRELL CREGG DIVISION DIRECTOR II
296 BROCK ZACHARY RAY MH-ATT
298 ALLEN ROBERT CRAIG PROJECTS OFFICER IV,SPECIAL
312 GIBSON BRENDA JANETTE NURSE III
314 CAMPBELL MARGARET ANN NURSE III
331 GRAHAM NANCY ANN NURSE III
343 JACK CHRISTY LYNN MH-RECREATION THERAPIST I
344 GILDEA SUSIE DIANE NURSE III
349 HENRY DONNA BESS NURSE III
353 WALKER SHONEEL LENISE ADMIN ASSISTANT V
362 YAGER COURTNEY HOPE NURSE III
366 JAMISON PATRICK LAMOND MH-ATT ADVANCED
368 ORSBORN ANGELA JEAN NURSE PRACTITIONER
369 ARMSTRONG CAROL ANITA BRANCH DIRECTOR II
370 HALL DEBORAH MARIE DIVISION DIRECTOR II
381 WINDOM GREGORY LAMAR MH-ATT ADVANCED
383 DAVIS MATTHEW ADAMS WAREHOUSE MANAGER II
385 HUTCHINSON BRANDON WESLEY NURSE II
390 OLSON KURTIS DMH-CAMPUS POLICE OFFICER
393 BROWN TIA NATEE MH-ATT, TRAINEE
394 LEWIS ROBERT PAUL MH-ATT ADVANCED

2012 Dodge Van - 7 Passenger Van

**VEHICLE POOL MEMBER LIST
2018 BUDGET REQUEST**

Mental Health - North Mississippi State Hospital (384-00)

Name of Agency

Pool
G60061

1 CALLENS PAUL A MH-INSTITUTIONAL DIRECTOR
3 LYONS HOLLIS GRAHAM ADMIN ASSISTANT V
5 STEGALL SARAH JO DIVISION DIRECTOR I
7 LIPPINCOTT CHARLES KENNETH CLINICAL DIRECTOR
9 RIALS JOE MCCARLEY BUREAU DIRECTOR II
10 JONES LISA LINNETT ADMIN ASSISTANT III
11 PITTMAN ERIC LYLE PHARMACIST III
12 WALTON KATRINKA SUE NURSE IV
13 MILEV DILYANA NENCHEVA PHYSICIAN, SENIOR
14 GARRISON ANDREA KOOSNE PHYSICIAN, SENIOR
15 JACKSON TIJWANA LATOYA MH-ATT ADVANCED
18 CRIDER JOYCE W NURSE III
20 GUIN CHRISTOPHER NURSE I
22 LUNN SHEILA H NURSE II
25 WILSON TINA RENEE NURSE I
26 RAY JENNIFER RENEE NURSE I
30 VANCE CATHERINE LEANNE NURSE I
32 ROBERTS LISA NURSE III
33 PHILLIPS SHIRLEY J NURSE III
34 JENKINS YVETTE MONIQUE NURSE III
35 ROSSI JENNIFER EARL NURSE III
37 VANCE HELEN L BUREAU DIRECTOR I
38 WALKER LINDA BEHAVIORIAL HEALTH SPECIALIST II
39 TRIPLETT THERESHA M BEHAVIORIAL HEALTH SPECIALIST II
40 PHYFER DANA LETRICE DIVISION DIRECTOR I
41 WUICHET DEBRA DIANN SOCIAL WORK DIRECTOR INST.
43 OWENS STEPHANY MACHELLE SOCIAL WORK SUPERVISOR INST.
45 BOWEN GUY SHERROD MH-RECREATION THERAPIST I
46 EVANS TERRANCE DEMOND MH-ATT, ADVANCED
48 BETHAY MICHAEL DEWET MH-ATT
49 CAYSON SAMUEL BERNARD MH-ATT, ADVANCED
50 COLE TERRY WAYNE MH-ATT, TRAINEE
53 HESTER MELINDA JOYCE PHARMACIST TECHNICIAN
54 EZELL FELESSIA M MH-ATT, ADVANCED
56 STONE JERMORRIS HAKEEN MH-ATT
58 TRIPLETT TANDEKA FANSHON MH-ATT, TRAINEE
59 HURD KENYATTA DEWAYNE MH-ATT, ADVANCED
61 HAYNES ARIEL ISREAL MH-ATT
63 MILLER LAQUESHA CHANISE MH-ATT, TRAINEE
64 STANFIELD KIMBERLY DEESE MH-ATT
65 BLACK ALEXANDER MH-ATT, ADVANCED
66 HOPPER MONICA LYNN MH-ATT, ADVANCED
68 THOMAS GEORGE SAPADA MH-ATT, TRAINEE
69 TURNER GHON ADOLPH MH-ATT
71 AKINS JIMMY LEE MH-ATT, ADVANCED
73 GRAMMER RHONDA LEE VOCATIONAL TRAINING INSTRUCTOR
75 KING KAHRENSA DIANE MH-ATT, TRAINEE
76 KING LISA DAWN VOCATIONAL TRAINING INSTRUCTOR
77 BARKLEY BENECIA DAWN MH-ATT
78 RICHARDSON KIMBERLEE MH-ATT, ADVANCED
79 SHANNON DOROTHY M MH-ATT, ADVANCED
80 MICHAEL KATHY NADARA BUREAU DIRECTOR I
81 BRYSON SHIRLEY A ADMIN ASSISTANT III
83 RIDDLE ANNIECE ADMIN ASSISTANT III
85 BRITT JOEY E DMH-CAMPUS POLICE OFFICER
86 RAWSON ROBERT LEE DMH-CAMPUS POLICE OFFICER
88 HARGETT ERNEST JAY DMH-CAMPUS POLICE OFFICER
89 JENNINGS RAY E DMH-CAMPUS POLICE OFFICER
90 ARMSTRONG SOMMER ELIZABETH DIRECTOR V
92 GRIST JOE THERALL DIVISION DIRECTOR I
93 WILHITE JAMES MURRAY SYSTEMS MANAGER I
94 JONES JEFFREY ALLAN PHYSICAL PLANT, DIRECTOR

**VEHICLE POOL MEMBER LIST
2018 BUDGET REQUEST**

Mental Health - North Mississippi State Hospital (384-00)

Name of Agency

95 EDWARDS SHERRY E HOUSEKEEPER SENIOR
97 WRIGHT BRYAN LYNELL MH-ATT, TRAINEE
99 SINCLAIR ANNA GRACE NURSE III
100 LYONS ELIZABETH ANNE ADMIN ASSISTANT V
101 ALLRED MICHELLE SHEA PHARMACIST TECHNICIAN
111 GRACE BRIAN L MH-ATT
113 ROWLAND DENNIS L NURSE PRACTITIONER
114 MARTIN RANDY PAUL MH-ATT, TRAINEE
118 HESTER JAMES LENARD FACILITIES MAINT SUPERVISOR
119 BALL LYNDA MH-ATT
132 GARMON SANDRA MARIA SOCIAL WORKER I
136 RUTH STARLA SOCIAL WORKER I
152 MCDANIEL GERI K ADMIN ASSISTANT III
170 GRIFFIN MICHAEL EDWARD FACILITIES MAINT SUPERVISOR
188 WHITTEN KERRY LANE DMH-CAMPUS POLICE, ASST CHIEF
190 AGNEW AUNDRA DORKESHA PERSONNEL OFFICER II
288 BOZEK CHRISTOPHER M. SYSTEMS MANAGER I
294 SAPPINGTON DERRELL CREGG DIVISION DIRECTOR II
296 BROCK ZACHARY RAY MH-ATT
298 ALLEN ROBERT CRAIG PROJECTS OFFICER IV,SPECIAL
312 GIBSON BRENDA JANETTE NURSE III
314 CAMPBELL MARGARET ANN NURSE III
331 GRAHAM NANCY ANN NURSE III
343 JACK CHRISTY LYNN MH-RECREATION THERAPIST I
344 GILDEA SUSIE DIANE NURSE III
349 HENRY DONNA BESS NURSE III
353 WALKER SHONEEL LENISE ADMIN ASSISTANT V
362 YAGER COURTNEY HOPE NURSE III
366 JAMISON PATRICK LAMOND MH-ATT ADVANCED
368 ORSBORN ANGELA JEAN NURSE PRACTITIONER
369 ARMSTRONG CAROL ANITA BRANCH DIRECTOR II
370 HALL DEBORAH MARIE DIVISION DIRECTOR II
381 WINDOM GREGORY LAMAR MH-ATT ADVANCED
383 DAVIS MATTHEW ADAMS WAREHOUSE MANAGER II
385 HUTCHINSON BRANDON WESLEY NURSE II
390 OLSON KURTIS DMH-CAMPUS POLICE OFFICER
393 BROWN TIA NATEE MH-ATT, TRAINEE
394 LEWIS ROBERT PAUL MH-ATT ADVANCED

2011 Chevrolet - 4 Door Sedan
Director
G57436

1 CALLENS PAUL A MH-INSTITUTIONAL DIRECTOR

2013 Chevrolet - Tahoe
Risk Management
G63484

85 BRITT JOEY E DMH-CAMPUS POLICE OFFICER
86 RAWSON ROBERT LEE DMH-CAMPUS POLICE OFFICER
88 HARGETT ERNEST JAY DMH-CAMPUS POLICE OFFICER
89 JENNINGS RAY E DMH-CAMPUS POLICE OFFICER
90 SPRADLIN JOHN E DMH-CAMPUS POLICE OFFICER
188 WHITTEN KERRY LANE DMH-CAMPUS POLICE, ASST CHIEF
294 SAPPINGTON DERRELL CREGG DIVISION DIRECTOR II

2000 GMC - 1 Ton Truck
Maintenance
G013081

94 JONES JEFFREY ALLAN PHYSICAL PLANT, DIRECTOR

**VEHICLE POOL MEMBER LIST
2018 BUDGET REQUEST**

Mental Health - North Mississippi State Hospital (384-00)

Name of Agency

118 HESTER JAMES LENARD FACILITIES MAINT SUPERVISOR
170 GRIFFIN MICHAEL EDWARD FACILITIES MAINT SUPERVISOR
383 DAVIS MATTHEW ADAMS WAREHOUSE MANAGER II

2005 GMC - 1 Ton Truck

Maintenance

G032954

94 JONES JEFFREY ALLAN PHYSICAL PLANT, DIRECTOR
118 HESTER JAMES LENARD FACILITIES MAINT SUPERVISOR
170 GRIFFIN MICHAEL EDWARD FACILITIES MAINT SUPERVISOR
383 DAVIS MATTHEW ADAMS WAREHOUSE MANAGER II

2011 Ford - Truck, Pick Up

Maintenance

G57435

94 JONES JEFFREY ALLAN PHYSICAL PLANT, DIRECTOR
118 HESTER JAMES LENARD FACILITIES MAINT SUPERVISOR
170 GRIFFIN MICHAEL EDWARD FACILITIES MAINT SUPERVISOR
383 DAVIS MATTHEW ADAMS WAREHOUSE MANAGER II

**PRIORITY OF DECISION UNITS
FISCAL YEAR 2018**

Mental Health - North Mississippi State Hospital (384-00)

Name of Agency

Program	Decision Unit	Object	Amount
Priority # 1			
Program # 1: MI - INSTITUTIONAL CARE			
Spending Authority Changes			
		Salaries	(70,006)
		Travel	4,750
		Totals	(65,256)
		General Funds	234,013
		Other Special Funds	(299,269)
Priority # 2			
Program # 1: MI - INSTITUTIONAL CARE			
Building Repair			
		OTE	237,000
		Totals	237,000
		General Funds	237,000
Priority # 3			
Program # 1: MI - INSTITUTIONAL CARE			
Position Reclassifications			
		Salaries	38,504
		Totals	38,504
		General Funds	19,436
		Other Special Funds	19,068
Priority # 4			
Program # 1: MI - INSTITUTIONAL CARE			
Educational Benchmarks			
		Salaries	30,011
		Totals	30,011
		Other Special Funds	30,011
Priority # 5			
Program # 2: MI - SUPPORT SERVICES			
Educational Benchmarks			
		Salaries	3,402
		Totals	3,402
		Other Special Funds	3,402
Priority # 6			
Program # 1: MI - INSTITUTIONAL CARE			
Vehicles			
		Vehicles	24,000
		Totals	24,000

**PRIORITY OF DECISION UNITS
FISCAL YEAR 2018**

Mental Health - North Mississippi State Hospital (384-00)

Name of Agency

Program	Decision Unit	Object	Amount
		Other Special Funds	24,000

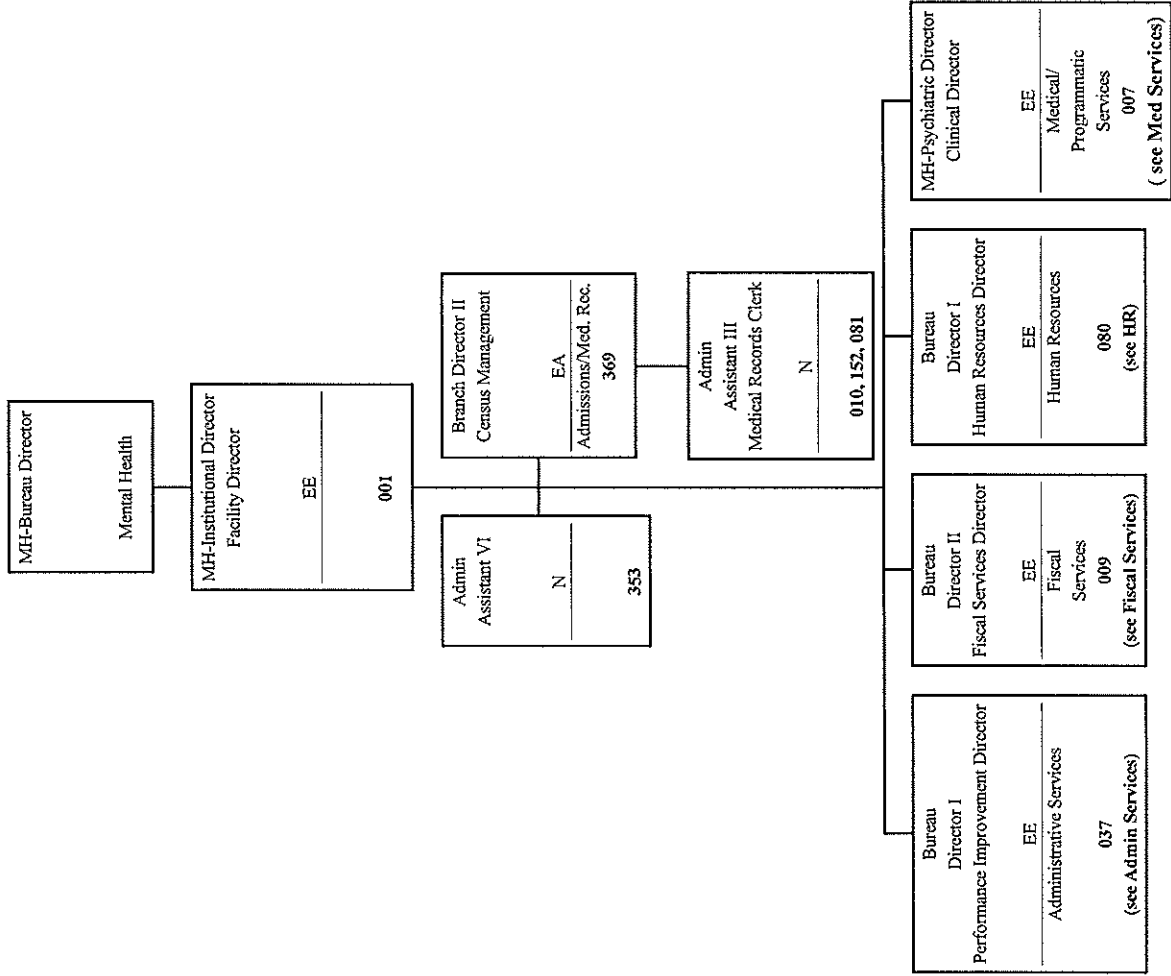
Summary of 3% General Fund Program Reduction to FY 2017 Appropriated Funding by Major Object

Mental Health - North Mississippi State Hospital (384-00)

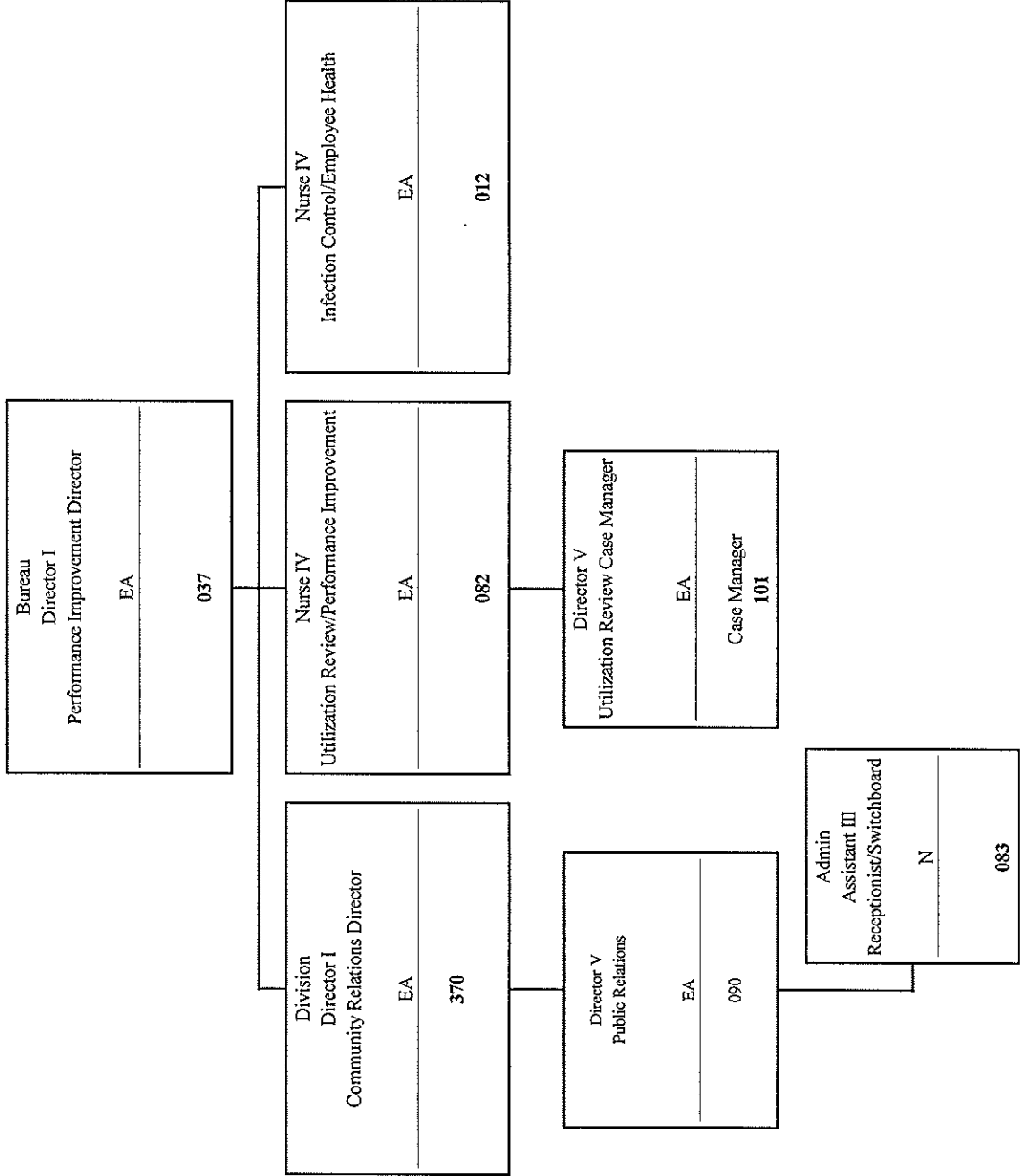
Name of Agency

Major Object	FY2017 General Fund Reduction	EFFECT ON FY2017 STATE SUPPORT SPECIAL FUNDS	EFFECT ON FY2017 FEDERAL FUNDS	EFFECT ON FY2017 OTHER SPECIAL FUNDS	TOTAL 3% REDUCTIONS
SALARIES, WAGES, FRINGE	(160,606)				(160,606)
TRAVEL					
CONTRACTUAL					
COMMODITIES					
OTHER THAN EQUIPMENT					
EQUIPMENT					
VEHICLES					
WIRELESS COMM. DEVS.					
SUBSIDIES, LOANS, ETC					
TOTALS	(160,606)				(160,606)

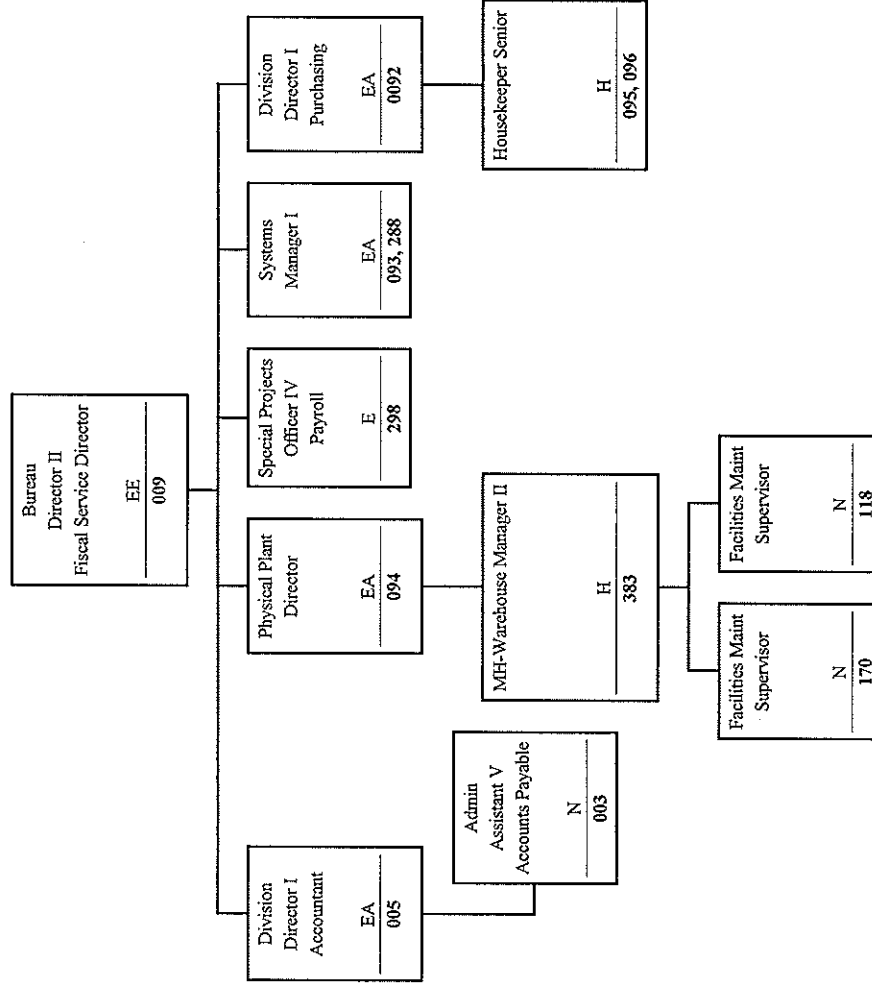
NORTH MISSISSIPPI STATE HOSPITAL
Agency # - 0388
FY 2017



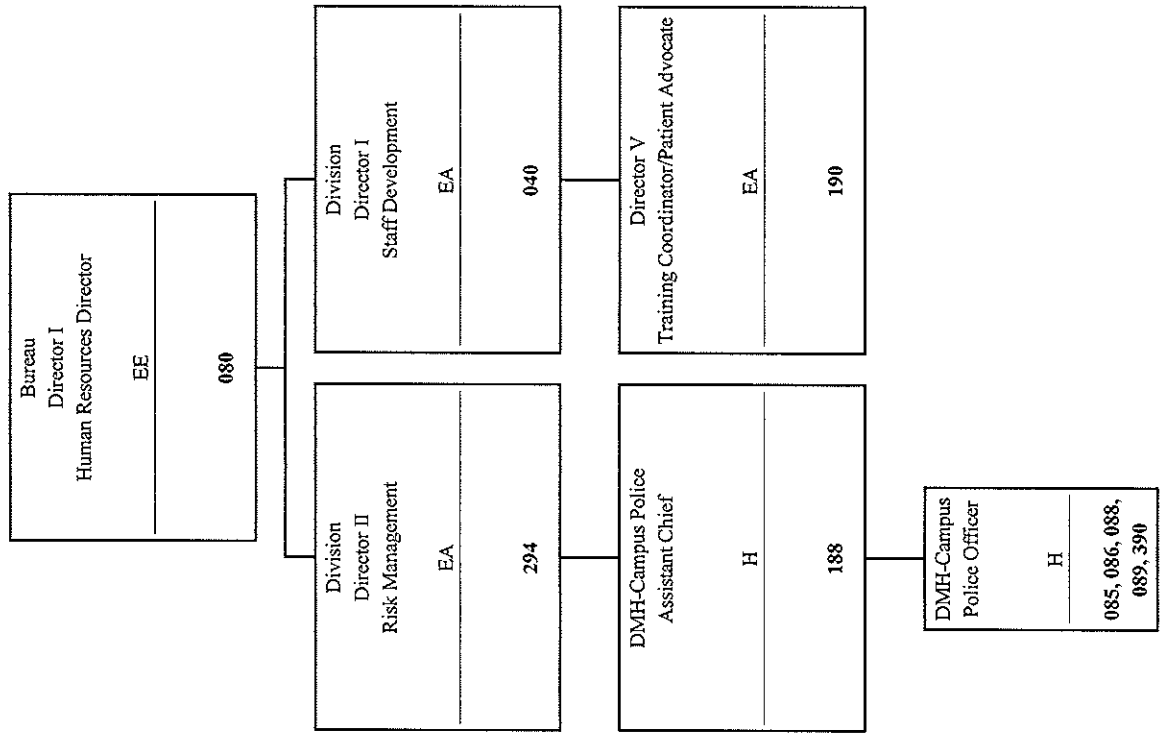
ADMINISTRATIVE SERVICES
FY 2017



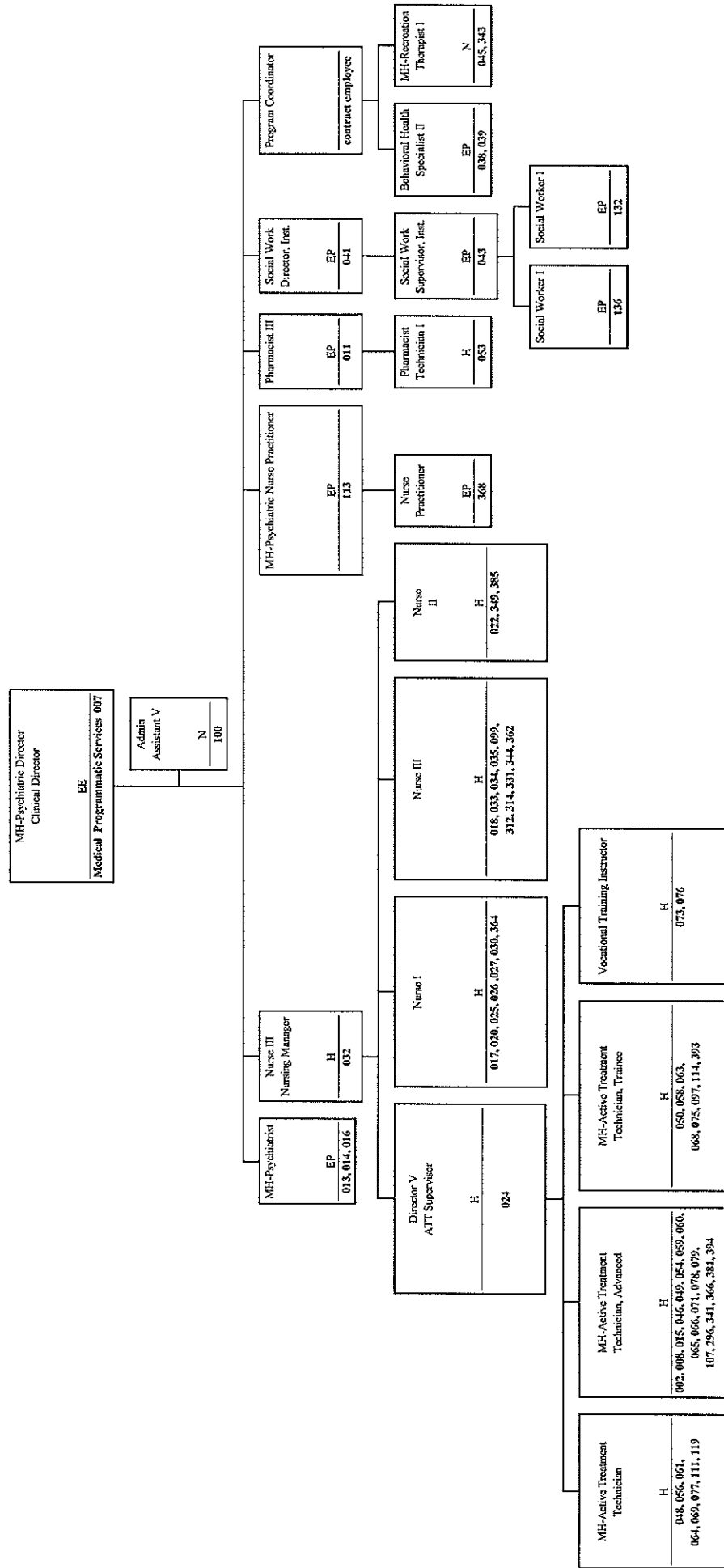
FISCAL SERVICES
FY 2017



HUMAN RESOURCES
FY 2017



MEDICAL / PROGRAMMATIC SERVICES
FY 2017



Agency Revenue Source Report - FY16 Data

As Required by HB 831, 2015 Legislative Session

And SB 2387, 2016 Legislative Session

Agency Name North Mississippi State Hospital

Budget Year 2016

State Support Sources **Amount Received**
 General Funds \$5,543,778

State Support Special Funds **Amount Received**

Education Enhancement Funds	
Health Care Expendable Funds	\$425,148
Tobacco Control Funds	
Capital Expense Funds	
Budget Contingency Funds	
Working Cash Stabilization Reserve Funds	

Special Funds **Amount Received**

Medicare Collections	\$1,849,688
Hospital Collections	\$59,153

Add Rows for Additional Special Funds

List all Federal Funds at its most specific level, such as an office or division, not the federal department.

<u>Federal Funds</u>	Amount Received	Action or results promised in order to receive funds
Sample Federal Fund #1		
Sample Federal Fund #2		
Description of any Maintenance of Effort agreements entered into with any federal agency or subdivision thereof		

Add Rows for Additional Special Funds

Revenue from Tax, Fine or Fee Assessed

Sample Tax, Fine, Fee #1	Amount Assessed	
<i>Copy Entire Section to Add New Item</i>	Amount Collected	
	Authority to Collect	
	Method of Determining Assessment	
	Method of Collection	

Amt. & Purpose for which Expended Amount	Purpose

Amount Transferred to General Fund	0
Authority for Transfer to General Fund	0
Amount Transferred to Another Entity	0
Authority for Transfer to Other Entity	0
Name of Other Entity	
Fiscal Year-Ending Balance	\$207,424